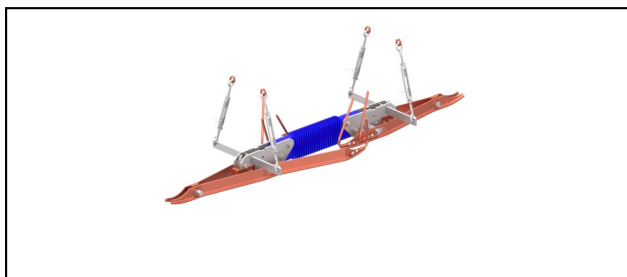


Section insulators

FD1.5 Section insulator



Application

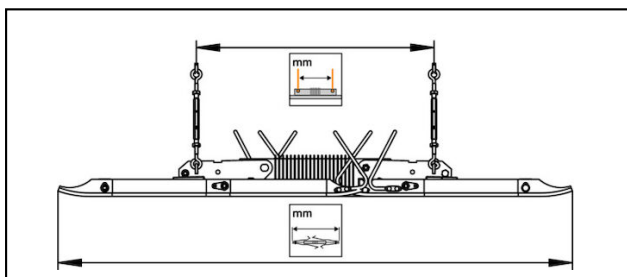
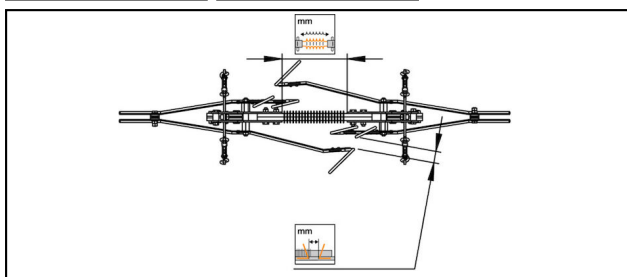
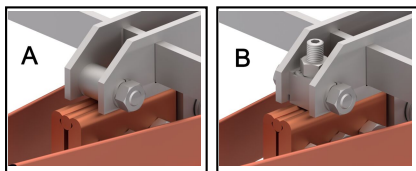
For tramway and light rail
Maximum speed up to 100 km/h

Material

GRP/silicone, Cu, CuNiSi, stainless steel

Legend

- 1) For 1 contact wire systems
- 2) For 2 contact wire systems
- A) Without adjusting screw for low service loads
- B) With adjusting screw for high service loads



| Article-Nr. | | | | | | | | | | |
|-------------|-----------|-----------|-----|-----|-----|----|------|--------|------|--|
| 655.336.707 | 100 - 152 | 5.6 - 6.9 | 450 | 610 | 435 | 35 | 1320 | max.32 | 1, B | |

| Accessories | | | | | | | | | | |
|-------------|--|--|--|--|--|--|--|--|------|---|
| MH FS/FD/FO | | | | | | | | | | |
| Article-Nr. | | | | | | | | | | |
| 690.070.000 | | | | | | | | | 24.7 | 1 |
| 655.300.000 | | | | | | | | | 2.8 | 2 |



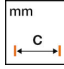


| Accessories | | | | | | | | | | |
|-------------|----|------|--|--|--|--|--|--|--|-----|
| SAL | | | | | | | | | | |
| Article-Nr. | | | | | | | | | | |
| 696.016.010 | AI | 1610 | | | | | | | | 1.2 |



Accessories



Turnbuckle SSCH200-280

| Article-Nr. | mm  | mm  | mm  | | | | | Kg  |  |
|-------------|---|---|---|--|--|--|--|---|---|
| 690.010.727 | 200 - 280 | 15 | | | | | | 0.163 | 1, 3 |
| 690.023.727 | 200 - 280 | 15 | | | | | | 0.163 | 1, 2 |
| 690.025.727 | 200 - 280 | 18 | 8 | | | | | 0.163 | 1, 2 |
| 690.035.000 | 200 - 280 | 18 | 8 | | | | | 0.163 | 1, 3 |
| 690.038.000 | 200 - 280 | 18 | 8 | | | | | 0.163 | 1, 3, 4 |

Technical Specifications: **Section insulator FD1.5**

| | |
|--|---------------------------|
| Article No. | 655.336.707 |
| Contact wire section | 100 - 152 mm ² |
| Contact wire groove | 5.6 - 6.9 mm |
| Creeping distance | 450 mm |
| Length between suspension | 610 mm |
| Length between contact wire | 435 mm |
| Arcing horn distance | 35 mm |
| Total length | 1320 mm |
| Recommended service load | max.32 |
| Specified mechanical load (SML) | 80 kN |
| Minimum breaking load of the section insulator | 80 kN |
| comment | |
| | 1, B |
| Commercial specification | |
| Customs number | 85353000 |
| country of origin | CH |
| Texte | |
| comment | 1, B |
| Logistic specification | |
| Kilo / piece | 13.3 kg |

