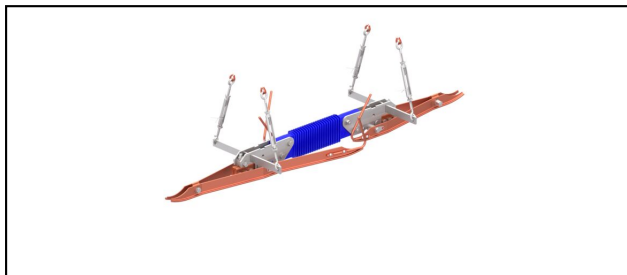


Section insulators

FO3 Section insulator



Application

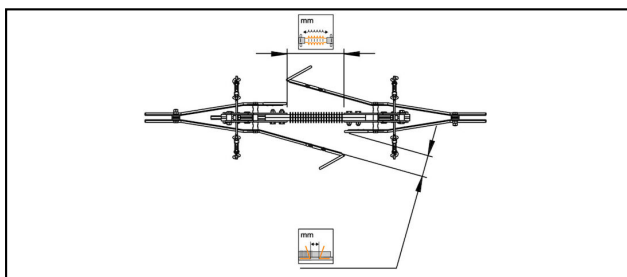
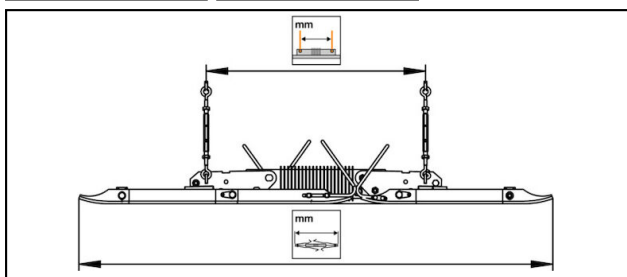
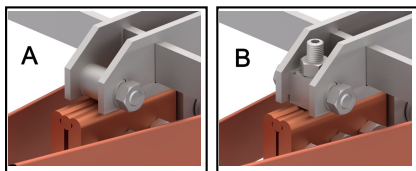
For regional trains and heavy rail
Maximum speed up to 100 km/h

Material

GRP/silicone, Cu, CuNiSi, stainless steel

Legend

- 1) For 1 contact wire systems
- 2) For 2 contact wire systems
- A) Without adjusting screw for low service loads
- B) With adjusting screw for high service loads



Article-Nr.										
655.300.040	100 - 150	5.6 - 6.9	450	610	435	55	1320	max.2x16	2, B	

Accessories

MH FS/FD/FO										
Article-Nr.										
690.070.000									24.7	1
655.300.000									2.8	2

Accessories



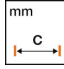


SAL										
Article-Nr.										
696.016.010	AI	1610								1.2



Accessories



Turnbuckle SSCH200-280

Article-Nr.	mm 	mm 	mm 					Kg 	
690.010.727	200 - 280	15						0.163	1, 3
690.023.727	200 - 280	15						0.163	1, 2
690.025.727	200 - 280	18	8					0.163	1, 2
690.035.000	200 - 280	18	8					0.163	1, 3
690.038.000	200 - 280	18	8					0.163	1, 3, 4

Technical Specifications: **Section insulator FO3**

Article No.	655.300.040
Contact wire section	100 - 150 mm ²
Contact wire groove	5.6 - 6.9 mm
Creeping distance	450 mm
Length between suspension	610 mm
Length between contact wire	435 mm
Arcing horn distance	55 mm
Total length	1320 mm
Recommended service load	max.2x16
Specified mechanical load (SML)	80 kN
Minimum breaking load of the section insulator	80 kN
comment	
	2, B
Commercial specification	
Customs number	85353000
country of origin	CH
Texte	
comment	2, B
Logistic specification	
Kilo / piece	13.5 kg

