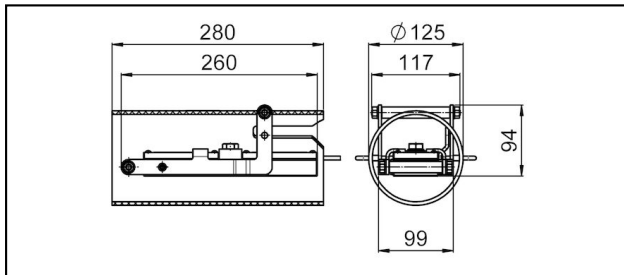
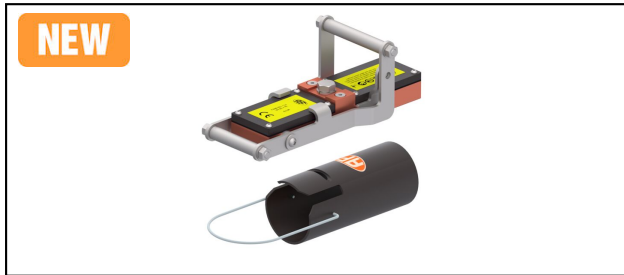


Magnetic earthing contacts

M170 Magnetic earthing contact



Application

Earthing of live railway overhead lines in AC & DC systems
Earthing of machines in the vicinity of live lines

Characteristics

Holding force 1'700 N
Maximum peak current 35 kA
Incl. storage- and transport case article-no. 696.025.005

Material

Earthing contact Cu. Body Cu, plastic, Lever stainless steel

Article-Nr.	kA/ms I_k									Kg
640.100.300	28 kA / 150 ms									4

Accessories



696.025.005

Article-Nr.										
696.025.005										

Technical Specifications: **Magnetic earthing contact M170**

	640.100.300
Short circuit current	28 kA / 150 ms kA/ms
Commercial specification	
Customs number	85359000
country of origin	CH
Logistic specification	
Kilo / piece	4 kg

