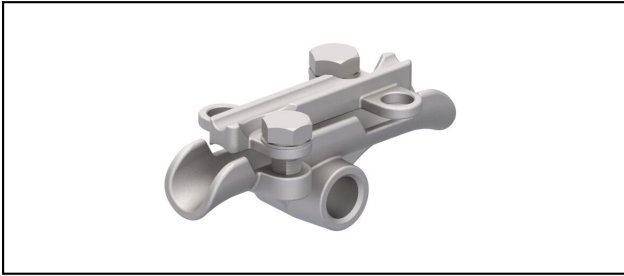


Feeder clamps

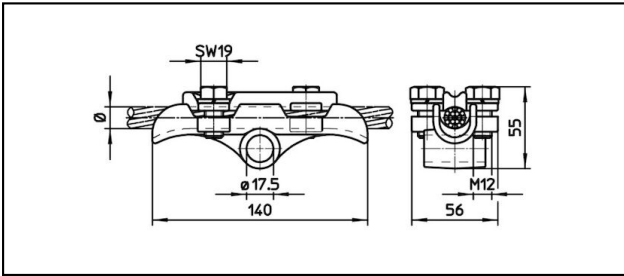
■ **TS** Messenger-wire support



Application
Messenger-wire support

Characteristics
Starting torque 25 Nm

Material
Stainless steel



Article-Nr.									
635.332.001	St rostfrei	50 - 150	9 - 16	50 - 150					0.53

Technical Specifications: **Messenger-wire support TS**

Article No.	635.332.001
Material	St rostfrei
Starting torque	25 N·m
Catenary wire section	50 - 150 mm ²
Catenary wire diameter	9 - 16 mm
Feeder cable section	50 - 150 mm ²
Commercial specification	
Customs number	85359000
country of origin	RC
Logistic specification	
Kilo / piece	0.53 kg

