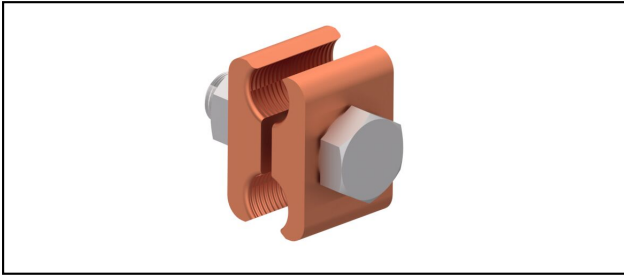


Feeder clamps

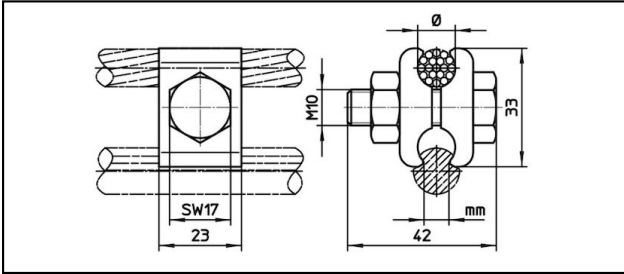
■ **PK23** Parallel feeder clamp

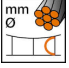
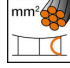
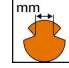



Application
Parallel feeder clamp for contact wire

Characteristics
Torque 50 Nm

Material
Clamping plates CuNiSi



Article-Nr.									
635.106.165	11	70	5.6 - 6.9						0.117

Technical Specifications: **Parallel feeder clamp PK23**

Article No.	635.106.165
Starting torque	50 N·m
Feeder cable diameter	11 mm
Feeder cable section	70 mm ²
Contact wire groove	5.6 - 6.9 mm
Commercial specification	
Customs number	85359000
country of origin	CH
Logistic specification	
Kilo / piece	0.117 kg

