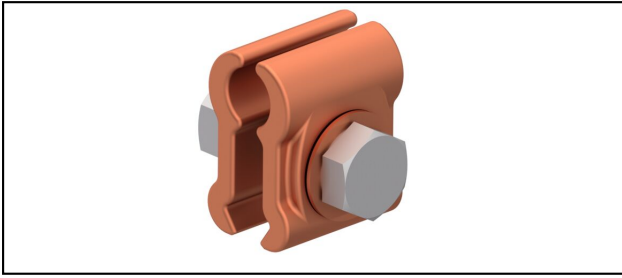


Feeder clamps

■ PEK2

**Application**

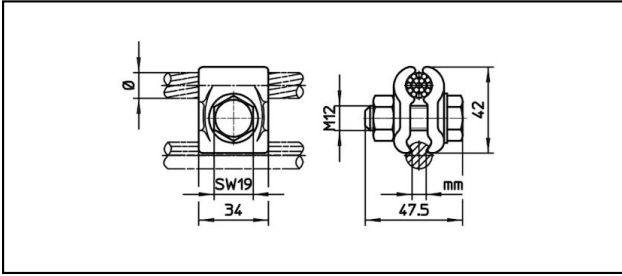
Parallel feeder clamp for contact wire

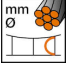
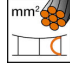
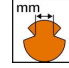

Characteristics

Torque 50 Nm

Material

CuNiSi



Article-Nr.	 mm Ø	 mm ²	 mm							 Kg
635.153.000	10.5 - 14	70 - 120	3.75 - 8.5							0.22

Technical Specifications: **PEK2**

	635.153.000
Starting torque	50 N·m
Feeder cable diameter	10.5 - 14 mm
Feeder cable section	70 - 120 mm ²
Contact wire groove	3.75 - 8.5 mm
Commercial specification	
Customs number	85359000
country of origin	CH
Logistic specification	
Kilo / piece	0.22 kg

