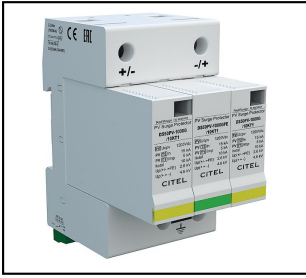


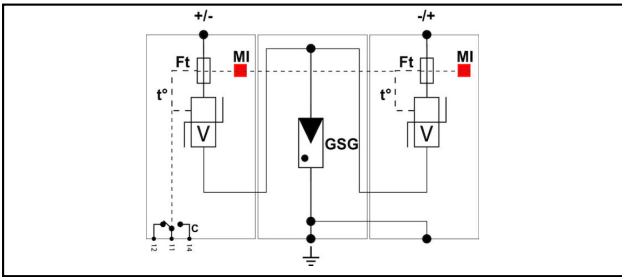
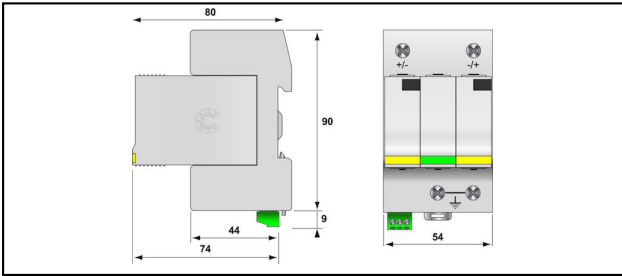
Photovoltaics

■ DS 50 PVS Photovoltaics surge protection T1+T2



Characteristics

- Surge protector photovoltaic type 1+2
- $I_{imp} = 5\text{kA/pole (10/350)}$
- internal disconnection, status indicator
- follow and operating current: none
- remote signaling



Article-Nr.	E-Number	Typ/Type		kA I_{max}	V U_C	kV U_P	kA I_{imp}	ns t_A	kA i_n	
296.480.393	808 486 330	T1 / T2	Yes	40	$\leq 1200\text{VDC}$	2.6	5	0	15	1
296.482.393	808 486 340	T1 / T2	Yes	40	$\leq 1200\text{VDC}$	2.6	6.25	0	15	1

Technical Specifications: Photovoltaics surge protection T1+T2 DS 50 PVS

	296.480.393	296.482.393
SPD type	T1 / T2	
Number of poles	2	
max. discharge current (I _{max})	40 kA	
Impulse current [I _{imp}]_(10/350)	5 kA	6.25 kA
Nominal discharge surge current (8/20)	15 kA	
Voltage protection level [U _p]	2.6 kV	
Response time [t _a]	0 ns	
Short circuit resistance (I _{cw})	1 kA	15 kA
Follow current [I _F]	0 kA	
Fault indication	mechanisch, Rot	
Temperature range	-40 - 85 °C	
Material housing	Thermoplastik PEI UL-94-V0	
Signaling on the device	Optic	
Signaling contact	Yes	
Connection cross section solid / stranded max.	1.5 mm ²	
Switching capacity signaling contact	250 V/0,5 A (AC) / - 30 V / 2 A (DC)	
Energetically coordinated protective effect to the terminal	Yes	
Exhausting	No	
Operation voltage max. [U _c]	≤1200VDC	
Nominal voltage DC	1000 V	
Mounting method	DIN rail (top hat rail) 35 mm	
Construction size	3 modular spacing	
System configuration DC	Yes	
Integrated backup fuse	No	
Nominal discharge current [I _n]	15/Pol	
Total discharge current (8/20) (L N-PE)	60 kA	
Connection cross section	2 - 25 mm ²	
Degree of protection (IP)	IP20	
Standards		
Test standards USA	UL 1449 ed.3	
Test standards Europe	EN 50539-11	
Test standards France	UTE C61-740-51	
Commercial specification		
Customs number	85363000	
country of origin	undefined	

