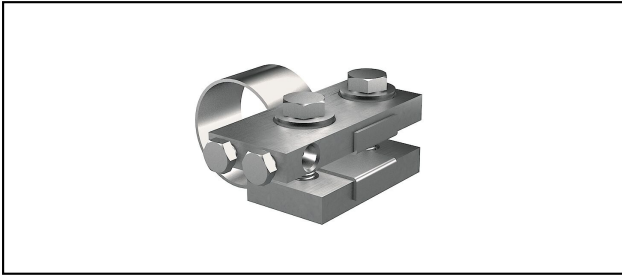
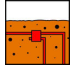
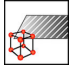
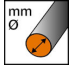

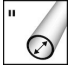






Ring earthing components

RE 35 Pipe and contact clip



Characteristics
Turnbuckles M10x40

Article-Nr.	E-Number									
260.014.205	156 832 610	ok	InoxA4	max.9	25	1"	32.7 - 34.7	M10x40		1

Technical Specifications: **Pipe and contact clip RE 35**

Article No.	260.014.205
Suitable for use in soil	ok
Material	InoxA4
Wire diameter	max.9
Nominal width	25
Nominal width	1"
Clamping range pipe diameter	32.7 - 34.7 mm
Clamping range inch	1 inch
Cross section of the connecting conductors	50 mm ²
Screw	M10x40
Surface protection	unbehandelt
Clamping/chucking range	32.7 - 34.7 mm
Number of conductors	1
required torque	12 N·m
Commercial specification	
Customs number	85389000
country of origin	CH
Logistic specification	
VPE Weight	0.753 kg

