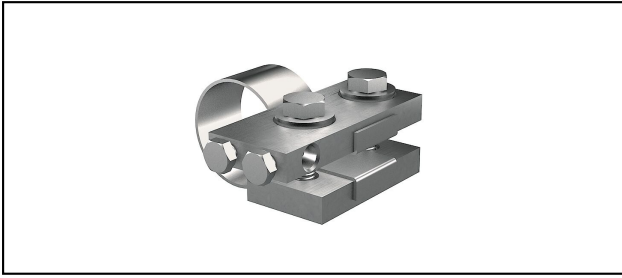
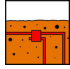
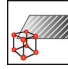
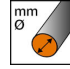
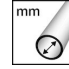
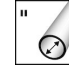
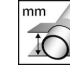




## Ring earthing components

### ■ RE 35 Pipe and contact clip



**Characteristics**  
Turnbuckles M10x40

Article-Nr.	E-Number									
260.022.034	156 832 440	ok	InoxA4	max.9	60 spez		73 - 75	M10x40		1

Technical Specifications: **Pipe and contact clip RE 35**

Article No.	260.022.034
Suitable for use in soil	ok
Material	InoxA4
Wire diameter	max.9
Nominal width	60 spez
Clamping range pipe diameter	73 - 75 mm
Clamping range inch	2 inch
Cross section of the connecting conductors	50 mm <sup>2</sup>
Screw	M10x40
Surface protection	unbehandelt
Clamping/chucking range	73 - 75 mm
Number of conductors	1
required torque	12 N·m
Commercial specification	
Customs number	85389000
country of origin	CH
Logistic specification	
VPE Weight	0.798 kg