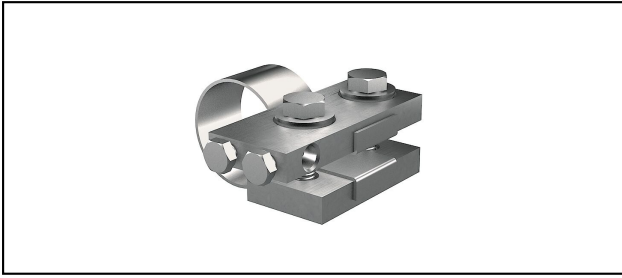
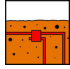
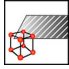
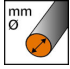

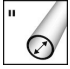





Ring earthing components

RE 35 Pipe and contact clip



Characteristics
Turnbuckles M10x40

Article-Nr.	E-Number									
260.023.073	156 832 450	ok	InoxA4	max.9	70 spez		83.4 - 85.4	M10x40		1

Technical Specifications: Pipe and contact clip RE 35

Article No.	260.023.073
Suitable for use in soil	ok
Material	InoxA4
Wire diameter	max.9
Nominal width	70 spez
Clamping range pipe diameter	83.4 - 85.4 mm
Clamping range inch	3 inch
Cross section of the connecting conductors	50 mm ²
Screw	M10x40
Surface protection	unbehandelt
Clamping/chucking range	83.4 - 85.4 mm
Number of conductors	1
required torque	12 N·m
Commercial specification	
Customs number	85389000
country of origin	CH
Logistic specification	
VPE Weight	0.803 kg