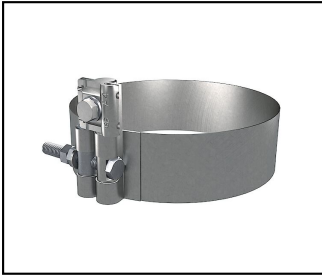


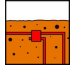
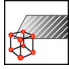
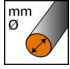

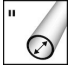



Ring earthing components

■ RE 36 Pipe clip



Characteristics

Turnbuckle M10x90
Incl. connection plate

Article-Nr.	E-Number									
260.011.083	156 832 570	ok	InoxA4	6 - 10	300	12"	323 - 329	M10x90		1

Technical Specifications: **Pipe clip RE 36**

Article No.	260.011.083
Suitable for use in soil	ok
Material	InoxA4
Wire diameter	6 - 10 mm
Nominal width	300
Nominal width	12"
Clamping range pipe diameter	323 - 329 mm
Cross section of the connecting conductors	50 mm ²
Number of conductors	1
Surface protection	unbehandelt
Screw	M10x90
Clamping/chucking range	320 - 324 mm
required torque	25 N·m
Commercial specification	
Customs number	85389000
country of origin	CH
Logistic specification	
VPE Weight	0.976 kg