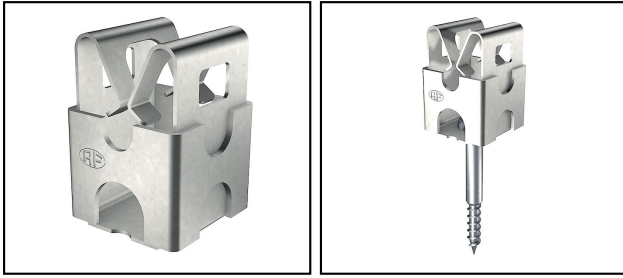


## Fixing elements

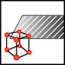
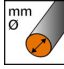

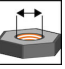
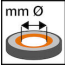


## ■ AV 59 Quadro conductor clip

**Characteristics**

The articles mentioned are pre-assembled for wire Ø 6mm, other pre-assembly on request

**Legend**

- a) Including plug
- b) pre-assembled for 8mm conductors
- {c) Inklusive Schlagdübel}

Article-Nr.	E-Number									
240.001.000	156 950 200	InoxA2	6/8/9/10			6.5			a)	50
240.015.000	156 950 400	InoxA2	6/8/9/10			6.5			b)	50
240.003.000	156 950 210	InoxA2	6/8/9/10		M6				a)	50
240.017.000	156 950 410	InoxA2	6/8/9/10		M6				b)	50
240.005.000	156 950 220	InoxA2	6/8/9/10	D. 5x40					a)	50
240.019.000	156 950 420	InoxA2	6/8/9/10	D. 5x40					b)	50
240.007.000	156 950 230	InoxA2	6/8/9/10	D. 5x50					a)	50
240.021.000	156 950 430	InoxA2	6/8/9/10	D. 5x50					b)	50
240.009.000	156 950 240	InoxA2	6/8/9/10	D. 5x60					a)	50
240.023.000	156 950 440	InoxA2	6/8/9/10	D. 5x60					b)	50
240.011.000	156 950 250	InoxA2	6/8/9/10	D. 6x40					a) + c)	50
240.025.000	156 950 450	InoxA2	6/8/9/10	D. 6x40					b) + c)	50

Technical Specifications: **Quadro conductor clip AV 59**

	240.001.000	240.015.000	240.003.000	240.017.000
<b>Material</b>	InoxA2			
<b>Wire diameter</b>	6/8/9/10 mm			
<b>Screw</b>				
<b>Internal thread</b>			M6	
<b>Eyelet diameter</b>	6.5 mm			
<b>Mounting type holder</b>	Bore hole		Bore hole with M thread	
<b>Material of carrier</b>	Stainless steel (A2)			
<b>Material base</b>	Stainless steel (A2)			
<b>Wall distance</b>	10 mm			
<b>Material of saddle clamp</b>	Stainless steel (A2)			
<b>Mounting type conductor</b>	With snap clamp			
Commercial specification				
<b>Customs number</b>	85389000			
<b>country of origin</b>	CH			
Logistic specification				
<b>VPE Weight</b>	0.866 kg		0.856 kg	

	240.005.000	240.019.000	240.007.000	240.021.000
<b>Material</b>	InoxA2			
<b>Wire diameter</b>	6/8/9/10 mm			
<b>Screw</b>	D. 5x40		D. 5x50	
<b>Internal thread</b>				
<b>Eyelet diameter</b>				
<b>Mounting type holder</b>	Bore hole		Bore hole	
<b>Material of carrier</b>	Stainless steel (A2)			
<b>Material base</b>	Stainless steel (A2)			
<b>Wall distance</b>	10 mm			
<b>Material of saddle clamp</b>	Stainless steel (A2)			
<b>Mounting type conductor</b>	With snap clamp			
Commercial specification				
<b>Customs number</b>	85389000			
<b>country of origin</b>	CH			
Logistic specification				
<b>VPE Weight</b>	1.1 kg		1.106 kg	

	240.009.000	240.023.000	240.011.000	240.025.000
<b>Material</b>	InoxA2			
<b>Wire diameter</b>	6/8/9/10 mm			
<b>Screw</b>	D. 5x60		D. 6x40	
<b>Internal thread</b>				
<b>Eyelet diameter</b>				
<b>Mounting type holder</b>	Bore hole		With plug	
<b>Material of carrier</b>	Stainless steel (A2)			
<b>Material base</b>	Stainless steel (A2)			
<b>Wall distance</b>	10 mm			
<b>Material of saddle clamp</b>	Stainless steel (A2)			
<b>Mounting type conductor</b>	With snap clamp			
Commercial specification				
<b>Customs number</b>	85389000			
<b>country of origin</b>	CH			
Logistic specification				
<b>VPE Weight</b>	1.14 kg		1.1 kg	

