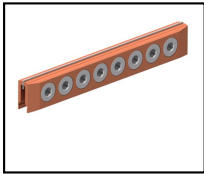
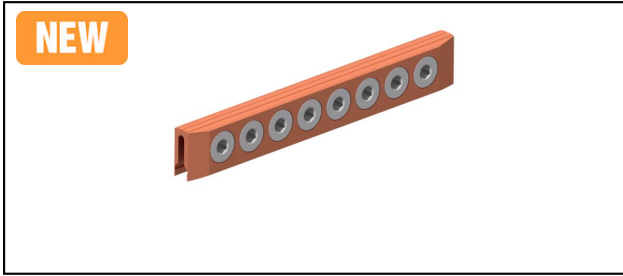


Splice fittings

SKT8-220



Application

Trolley splice fitting for copper or alloy contact wire

Characteristics

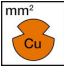
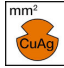


Torque 50 Nm

Material

Clamping plates CuNiSi / Bolts INOX A4

Legend

- 1) with steel distance plate
- 2) without steel distance plate

Article-Nr.									
635.370.000	- 150	- 150						0.71	1
635.371.000	- 150	- 150						0.69	2

Technical Specifications: **SKT8-220**

	635.370.000	635.371.000
Starting torque	50 N·m	
Contact wire groove	6.9 mm	5.6 mm
Contact wire section Cu	- 150 mm ²	
Contact wire section CuMg 0.2	- 120 mm ²	
Contact wire section CuAg	- 150 mm ²	
Commercial specification		
Customs number	85359000	
country of origin	undefined	CH
Logistic specification		
Kilo / piece	0.71 kg	0.69 kg

