

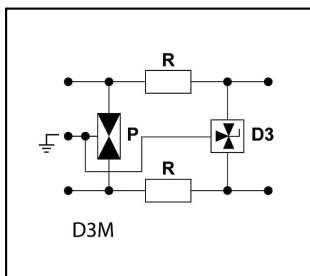
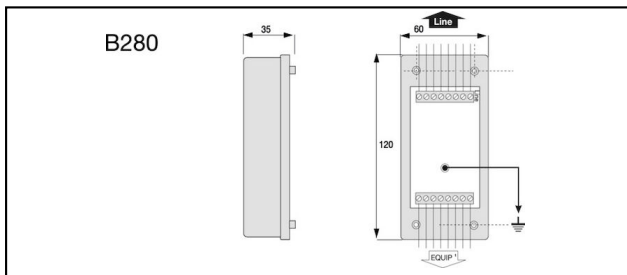
## Informatics, Telecommunication




### B 280 Surge protection



#### Characteristics

Citel B 180 and B 280 surge protectors have been designed to protect your single and dual telephone and data lines against harmful lightning surges and electrical transients. The two-staged protection circuit consists of a combination of powerful gas-tube technology and fast switching diodes. These compact boxes are designed for wall mounting and screw connection.



Article-Nr.	E-Number			$\text{kA}$ $i_n$	$\text{kA}$ $I_{max}$	$\text{kV}$ $U_P$				
296.072.776	970 524 003	ISDN	4	5	20	0.22				1

## Technical Specifications: Surge protection B 280

Article No.	296.072.776
Applications with interface	ISDN
Number of wires	4
Continuous voltage DC max.	170 V
Operating voltage max. [UcDC]	170 V
Nominal line voltage Un DC	150 V
Continuous voltage AC max.	121 V
Impulse current [Iimp]_(10/350)	2.5 kA
Nominal discharge surge current (8/20)	5 kA
Nominal load current	0.3 A
Voltage protection level [Up]	0.22 kV
Response time [ta]	<1
Fault indication	Kurzschluss
Temperature range	-40 - 80 °C
Dimensions	Siehe Massbild
Signaling on the device	None
Signal frequency	10 MHz
Discharge current max. [Imax]	20 kA
Connector (information technology)	Clamp
Nominal cross section conductor	0.4 - 1.5 mm <sup>2</sup>
Nominal discharge current [In]	5
Signal nominal load current	0.3 A
Mounting method	On basic element
With remote signalling contact	No
Degree of protection (IP)	IP20
<b>Standards</b>	
Test standards International	IEC 61643-21
Test standards USA	UL497A
<b>Commercial specification</b>	
Customs number	85363000
country of origin	ZA*

