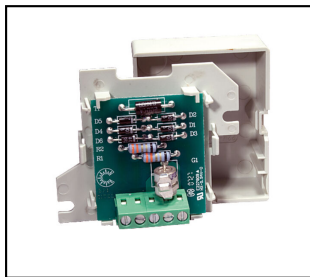


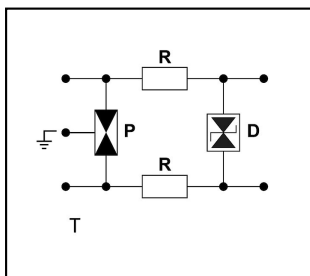
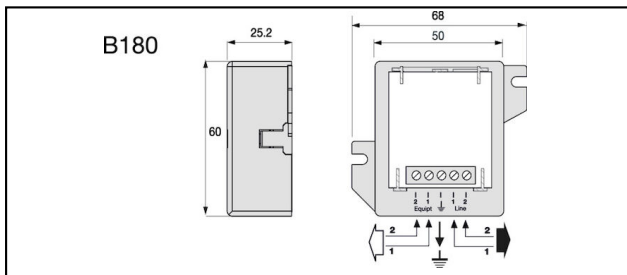
Informatics, Telecommunication





B 180 Surge protection



Characteristics

Citel B 180 and B 280 surge protectors have been designed to protect your single and dual telephone and data lines against harmful lightning surges and electrical transients. The two-staged protection circuit consists of a combination of powerful gas-tube technology and fast switching diodes. These compact boxes are designed for wall mounting and screw connection.



Article-Nr.	E-Number			kA i_n	kA I_{max}	kV U_P	mm^2 			
296.072.364	970 513 003	ADSL	2	5	20	0.07	0.4 - 1.5			1

Technical Specifications: Surge protection B 180

Article No.	296.072.364
Number of wires	2
Continuous voltage DC max.	53 V
Signal - maximum continuous voltage AC	38 V
Operating voltage max. [UcDC]	53 V
Applications with interface	ADSL
Nominal line voltage Un DC	48 V
Continuous voltage AC max.	37 V
Impulse current [Iimp]_(10/350)	2.5 kA
Discharge current max. (8/20) μ s [I _{max}]	20 kA
Nominal discharge surge current (8/20)	5 kA
Nominal load current	0.3 A
Voltage protection level [Up]	0.07 kV
Response time [ta]	<1
Fault indication	Kurzschluss
Temperature range	-40 - 80 °C
Dimensions	Siehe Massbild
Signaling on the device	None
Signal frequency	3 MHz
Connector (information technology)	Clamp
Discharge current max. [I _{max}]	20 kA
Nominal cross section conductor	0.4 - 1.5 mm ²
Nominal discharge current [I _n]	5
Signal nominal load current	0.3 A
Mounting method	Other
With remote signalling contact	No
Degree of protection (IP)	IP20
Standards	
Test standards International	IEC 61643-21
Test standards USA	UL497A
Commercial specification	
Customs number	85363000
country of origin	ZA*
Logistic specification	
VPE Weight	0.064 kg

