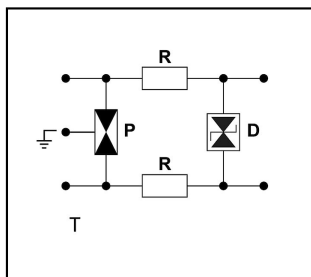
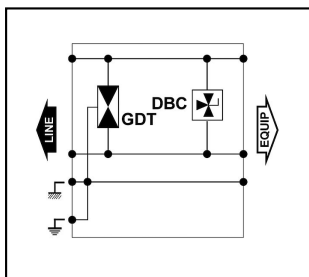
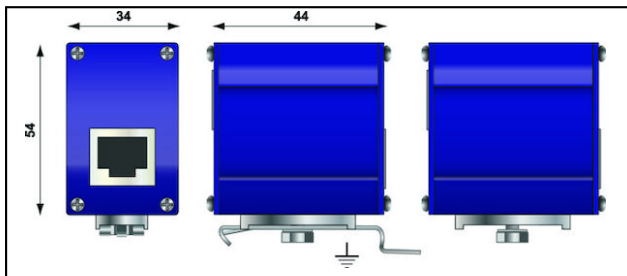


Informatics, Telecommunication

MJ 8 Surge protection

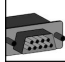


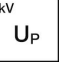
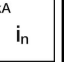




Characteristics

These surge protectors are designed to protect sensitive telecom terminals (modems, fax machines, ISDN-telephones...). This surge protector features in/out RJ45 and RJ11 connectors. Different types of installation possible.

Legend

a) POE-A and POE-B compatible

Article-Nr.	E-Number								
		analog	30Mbps/>10MHz	4	U_P	i_n			1
296.072.833	970 516 003				0.07	2			

Technical Specifications: Surge protection MJ 8

Article No.	296.072.833
Operating voltage max. [UcDC]	41 V
Nominal discharge surge current (8/20)	2 kA
Nominal load current	0.4 A
Voltage protection level [Up]	0.07 kV
Fault indication	Signalunterbruch
Material housing	Metal
Signaling on the device	None
Max. Transmission rate/Frequency	30Mbps/>10MHz
With remote signalling contact	No
Nominal discharge current [In]	2
Mounting method	DIN rail (top hat rail) 35 mm
Degree of protection (IP)	IP20
Applications with interface	analog
Number of wires	4
Voltage protection level L-N [Up]	0.07 kV
Signal nominal voltage DC	58 V
Signal - maximum continuous voltage DC	60 V
Signal nominal load current	0.4 A
Standards	
Test standards International	IEC 61643-21
Test standards USA	UL497A&B
Commercial specification	
Customs number	85363000
country of origin	ZA*
Logistic specification	
VPE Weight	0.146 kg

