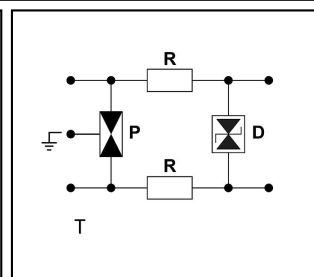
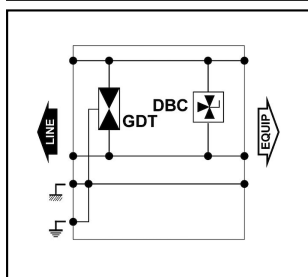
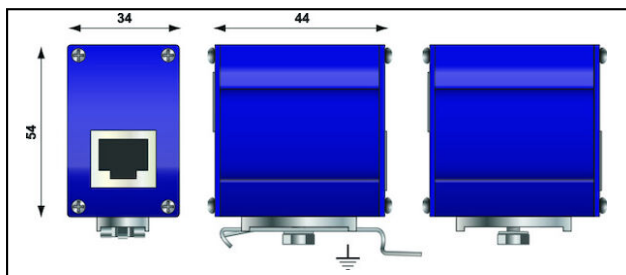


Informatics, Telecommunication

MJ 8 Surge protection

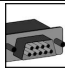


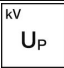





Characteristics

These surge protectors are designed to protect sensitive telecom terminals (modems, fax machines, ISDN-telephones...). This surge protector features in/out RJ45 and RJ11 connectors. Different types of installation possible.

Legend

a) POE-A and POE-B compatible

Article-Nr.	E-Number									
296.072.855	970 507 003	ISDN T0/S0	30Mbps/>10MHz	8	0.22	2				1

Technical Specifications: Surge protection MJ 8

Article No.	296.072.855
Operating voltage max. [UcDC]	170 V
Nominal discharge surge current (8/20)	2 kA
Nominal load current	1 A
Voltage protection level [Up]	0.22 kV
Fault indication	Signalunterbruch
Material housing	Metal
Signaling on the device	None
Max. Transmission rate/Frequency	30Mbps/>10MHz
With remote signalling contact	No
Nominal discharge current [In]	2
Mounting method	DIN rail (top hat rail) 35 mm
Degree of protection (IP)	IP20
Applications with interface	ISDN T0/S0
Number of wires	8
Voltage protection level L-N [Up]	0.22 kV
Signal nominal voltage DC	150 V
Signal - maximum continuous voltage DC	170 V
Signal nominal load current	1 A
Standards	
Test standards International	IEC 61643-21
Test standards USA	UL497A&B
Commercial specification	
Customs number	85363000
country of origin	CE*
Logistic specification	
VPE Weight	0.15 kg

