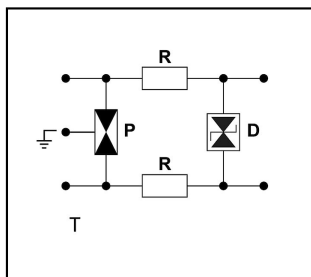
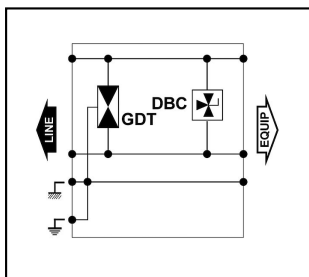
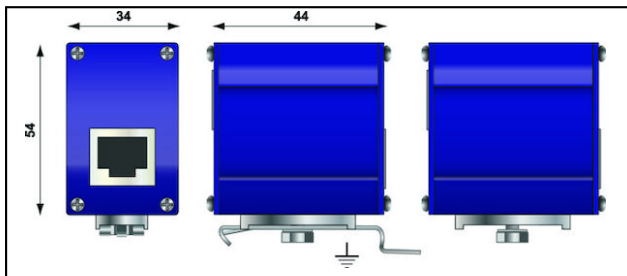


Informatics, Telecommunication

MJ 8 Surge protection

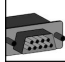


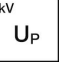
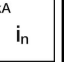




Characteristics

These surge protectors are designed to protect sensitive telecom terminals (modems, fax machines, ISDN-telephones...). This surge protector features in/out RJ45 and RJ11 connectors. Different types of installation possible.

Legend

a) POE-A and POE-B compatible

Article-Nr.	E-Number		 Mbits		 U_P	 i_n				 VE Emb.
296.560.303	970 517 003	Cat 6S / Ethernet All IP	10Gbps/>2 50MHz	8	0.02	2				1

Technical Specifications: Surge protection MJ 8

Article No.	296.560.303
Operating voltage max. [UcDC]	8 V
Nominal line voltage Un DC	5 V
Nominal discharge surge current (8/20)	2 kA
Nominal load current	1 A
Voltage protection level [Up]	0.02 kV
Fault indication	Signalunterbruch
Material housing	Metal
Signaling on the device	None
Max. Transmission rate/Frequency	10Gbps/>250MHz
With remote signalling contact	No
Nominal discharge current [In]	2
Mounting method	DIN rail (top hat rail) 35 mm
Degree of protection (IP)	IP20
Applications with interface	Cat 6S / Ethernet All IP
Number of wires	8
Impulse current [Iimp]_(10/350)	0.5 kA
Voltage protection level L-N [Up]	0.02 kV
Signal nominal voltage DC	5 V
Signal - maximum continuous voltage DC	8 V
Signal nominal load current	1 A
Standards	
Test standards International	IEC 61643-21
Test standards USA	UL497A&B
Commercial specification	
Customs number	85363000
country of origin	ZA*
Logistic specification	
VPE Weight	0.154 kg

