

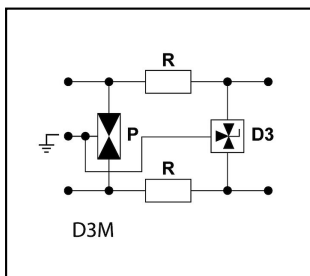
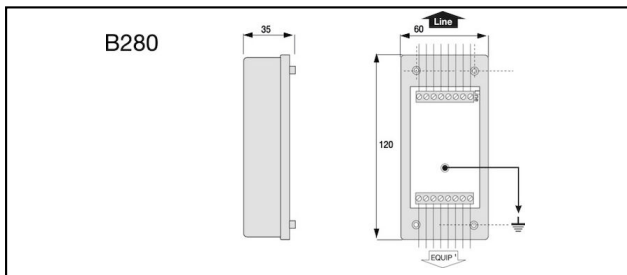
Informatics, Telecommunication




B 280 Surge protection DLU-06D3



Characteristics

Citel B 180 and B 280 surge protectors have been designed to protect your single and dual telephone and data lines against harmful lightning surges and electrical transients. The two-staged protection circuit consists of a combination of powerful gas-tube technology and fast switching diodes. These compact boxes are designed for wall mounting and screw connection.



Article-Nr.	E-Number			kA i_n	kA I_{max}	kV U_P				
296.072.774	970 523 003	ADSL	4	5	20	0.07				1
296.072.776	970 524 003	ISDN	4	5	20	0.22				1

Technical Specifications: Surge protection DLU-06D3 B 280

	296.072.774	296.072.776
Number of wires	4	
Continuous voltage DC max.	53 V	170 V
Signal - maximum continuous voltage AC	37 V	
Operating voltage max. [UcDC]	53 V	170 V
Applications with interface	ADSL	ISDN
Nominal line voltage Un DC	48 V	150 V
Continuous voltage AC max.	38 V	121 V
Impulse current [Iimp]_(10/350)	2.5 kA	
Nominal discharge surge current (8/20)	5 kA	
Nominal load current	0.3 A	
Voltage protection level [Up]	0.07 kV	0.22 kV
Response time [ta]	<1 ns	<1 ns
Fault indication	Kurzschluss	
Temperature range	-40 - 80 °C	
Dimensions	Siehe Massbild	
Signaling on the device	None	
Signal frequency	10 MHz	
Discharge current max. [Imax]	20 kA	
Connector (information technology)	Clamp	
Nominal cross section conductor	0.4 - 1.5 mm ²	
Nominal discharge current [In]	5	
Signal nominal load current	0.3 A	
Mounting method	Other	On basic element
With remote signalling contact	No	
Degree of protection (IP)	IP20	
Standards		
Test standards International	IEC 61643-21	
Test standards USA	UL497A	
Commercial specification		
Customs number	85363000	
country of origin	ZA*	
Logistic specification		
VPE Weight	0.184 kg	