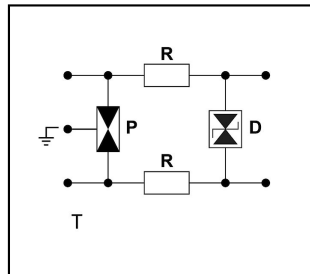
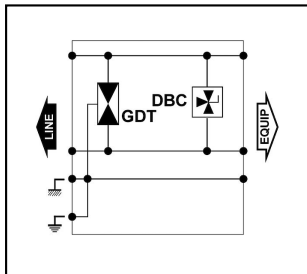
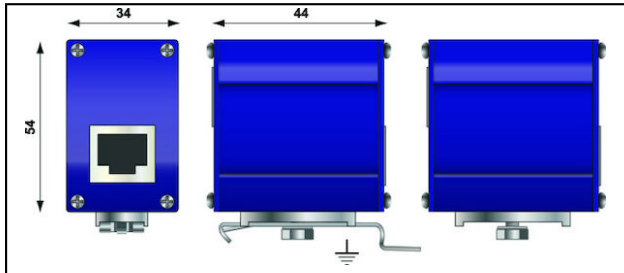


Informatics, Telecommunication

MJ 8 Surge protection DLU-06D3

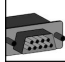


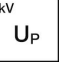
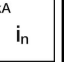




Characteristics

These surge protectors are designed to protect sensitive telecom terminals (modems, fax machines, ISDN-telephones...). This surge protector features in/out RJ45 and RJ11 connectors. Different types of installation possible.

Legend

a) POE-A and POE-B compatible

Article-Nr.	E-Number								
			Mbits		U_P	I_n			VE Emb.
296.072.833	970 516 003	analog	30Mbps/>10MHz	4	0.07	2			1
296.072.855	970 507 003	ISDN T0/S0	30Mbps/>10MHz	8	0.22	2			1
296.560.303	970 517 003	Cat 6S / Ethernet All IP	10Gbps/>250MHz	8	0.02	2			1
296.581.540	970 518 003	Cat 6A	10Gbps/500MHz		0.02	0.5			1
296.581.541	970 517 103	POE++	10Gbps/500MHz	8	0.07	2		a)	1

Technical Specifications: Surge protection DLU-06D3 MJ 8

	296.072.833	296.072.855	296.560.303	296.581.540
Operating voltage max. [UcDC]	41 V	170 V	8 V	
Nominal line voltage Un DC			5 V	
Nominal discharge surge current (8/20)	2 kA			0.5 kA
Nominal load current	0.4 A	1 A		
Voltage protection level [Up]	0.07 kV	0.22 kV	0.02 kV	
Fault indication	Signalunterbruch			
Material housing	Metal			
Signaling on the device	None			
Max. Transmission rate/Frequency	30Mbps/>10MHz Mbit	30Mbps/>10MHz Mbit	10Gbps/>250MHz Mbit	10Gbps/500MHz Mbit
With remote signalling contact	No			
Nominal discharge current [In]	2			
Mounting method	DIN rail (top hat rail) 35 mm			
Degree of protection (IP)	IP20			
Applications with interface	analog	ISDN T0/S0	Cat 6S / Ethernet All IP	Cat 6A
Number of wires	4	8		
Impulse current [Iimp]_(10/350)			0.5 kA	
Voltage protection level L-N [Up]	0.07 kV	0.22 kV	0.02 kV	
Signal nominal voltage DC	58 V	150 V	5 V	
Signal - maximum continuous voltage DC	60 V	170 V	8 V	
Signal nominal load current	0.4 A	1 A		
Standards				
Test standards International	IEC 61643-21			
Test standards USA	UL497A&B			UL497B
Commercial specification				
Customs number	85363000			
country of origin	ZA*	CE*	ZA*	
Logistic specification				
VPE Weight	0.146 kg	0.15 kg	0.154 kg	

	296.581.541			
Operating voltage max. [UcDC]	60 V			
Nominal line voltage Un DC	48 V			
Nominal discharge surge current (8/20)	2 kA			
Nominal load current	2 A			
Voltage protection level [Up]	0.07 kV			
Fault indication	Signalunterbruch			
Material housing	Metal			
Signaling on the device	None			
Max. Transmission rate/Frequency	10Gbps/500MHz Mbit			
With remote signalling contact	No			
Nominal discharge current [In]	2			
Mounting method	DIN rail (top hat rail) 35 mm			
Degree of protection (IP)	IP20			
Applications with interface	POE++			
Number of wires	8			
Impulse current [Iimp]_(10/350)	0.5 kA			
Voltage protection level L-N [Up]	0.07 kV			
Signal nominal voltage DC	48 V			
Signal - maximum continuous voltage DC	60 V			
Signal nominal load current	2 A			
Standards				
Test standards International	IEC 61643-21			
Test standards USA	UL497A&B			
Commercial specification				
Customs number	85363000			
country of origin	ZA*			
Logistic specification				
VPE Weight	0.154 kg			

