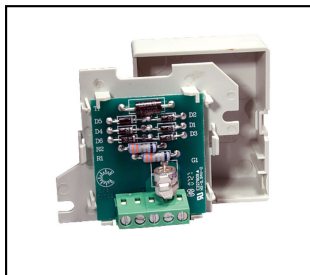


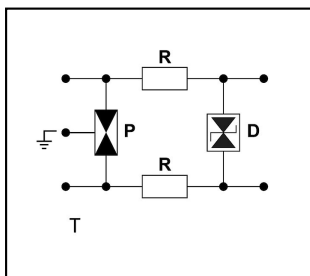
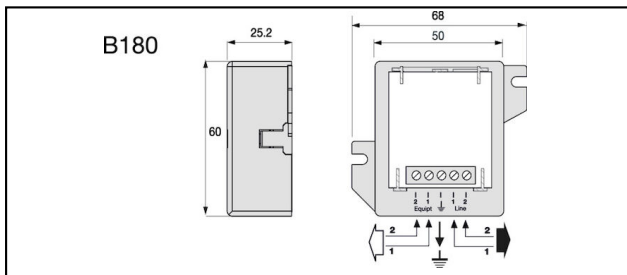
## Informatics, Telecommunication




### B 180 Surge protection DLU-06D3



#### Characteristics

Citel B 180 and B 280 surge protectors have been designed to protect your single and dual telephone and data lines against harmful lightning surges and electrical transients. The two-staged protection circuit consists of a combination of powerful gas-tube technology and fast switching diodes. These compact boxes are designed for wall mounting and screw connection.



Article-Nr.	E-Number			$\text{kA } i_n$	$\text{kA } I_{\text{max}}$	$\text{kV } U_P$	$\text{mm}^2$			
296.072.364	970 513 003	ADSL	2	5	20	0.07	0.4 - 1.5			1
296.072.366	970 514 003	ISDN	2	5	20	0.22	0.4 - 1.5			1

## Technical Specifications: Surge protection DLU-06D3 B 180

	296.072.364	296.072.366
Number of wires	2	
Continuous voltage DC max.	53 V	170 V
Signal - maximum continuous voltage AC	38 V	121 V
Operating voltage max. [UcDC]	53 V	170 V
Applications with interface	ADSL	ISDN
Nominal line voltage Un DC	48 V	150 V
Continuous voltage AC max.	37 V	121 V
Impulse current [Iimp]_(10/350)	2.5 kA	
Discharge current max. (8/20) $\mu$ s [Imax]	20 kA	
Nominal discharge surge current (8/20)	5 kA	
Nominal load current	0.3 A	
Voltage protection level [Up]	0.07 kV	0.22 kV
Response time [ta]	<1 ns	<1 ns
Fault indication	Kurzschluss	
Temperature range	-40 - 80 °C	
Dimensions	Siehe Massbild	
Signaling on the device	None	
Signal frequency	3 MHz	10 MHz
Connector (information technology)	Clamp	
Discharge current max. [Imax]	20 kA	
Nominal cross section conductor	0.4 - 1.5 mm <sup>2</sup>	
Nominal discharge current [In]	5	
Signal nominal load current	0.3 A	
Mounting method	Other	
With remote signalling contact	No	
Degree of protection (IP)	IP20	
Standards		
Test standards International	IEC 61643-21	
Test standards USA	UL497A	
Commercial specification		
Customs number	85363000	
country of origin	ZA*	CE*
Logistic specification		
VPE Weight	0.064 kg	0.063 kg