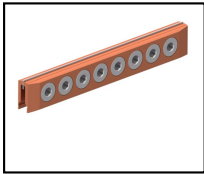
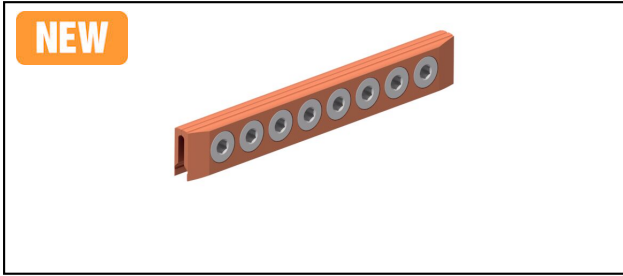


Splice fittings

■ **SKT8-220** Trolley splice fitting



Application

Trolley splice fitting for copper or alloy contact wire

Characteristics

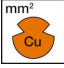
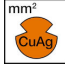


Torque 50 Nm

Material

Clamping plates CuNiSi / Bolts INOX A4

Legend

- 1) with steel distance plate
- 2) without steel distance plate

Article-Nr.									
635.370.000	- 150	- 150						0.71	1

Technical Specifications: **Trolley splice fitting SKT8-220**

Article No.	635.370.000
Starting torque	50 N·m
Contact wire groove	6.9 mm
Contact wire section Cu	- 150 mm ²
Contact wire section CuMg 0.2	- 120 mm ²
Contact wire section CuAg	- 150 mm ²
comment	1
Commercial specification	
Customs number	85359000
country of origin	undefined
Texte	
comment	1
Logistic specification	
Kilo / piece	0.71 kg

