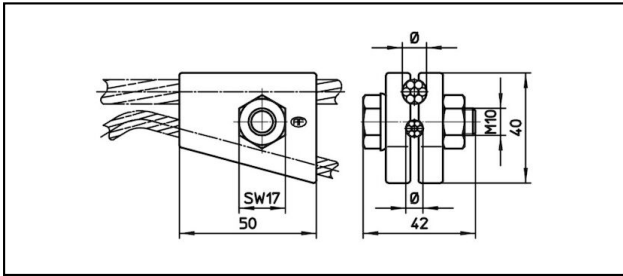
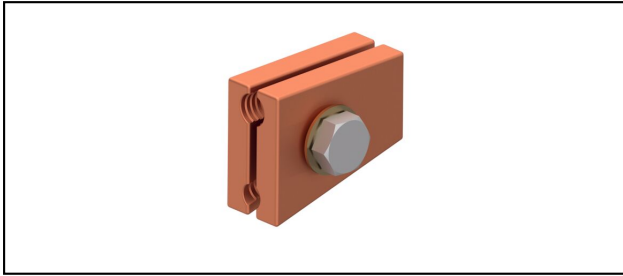


Various clamps

■ **YK50** Y-Clamp



Application
For Y-wire

Characteristics
Max. tension for Y-wire 4.5 kN
Torque 45 Nm

Material
CuNiSi

Legend
1) for Y-wire 25 mm²
2) for Y-wire 35 - 50 mm²

Article-Nr.									
635.347.000	9	50	6.3					0.256	1

Technical Specifications: **Y-Clamp YK50**

Article No.	635.347.000
Starting torque	45 N·m
Catenary wire diameter	9 mm
Catenary wire section	50 mm ²
Y-cable section	6.3 mm
comment	1
Commercial specification	
Customs number	85359000
country of origin	undefined
Texte	
comment	1
Logistic specification	
Kilo / piece	0.256 kg

