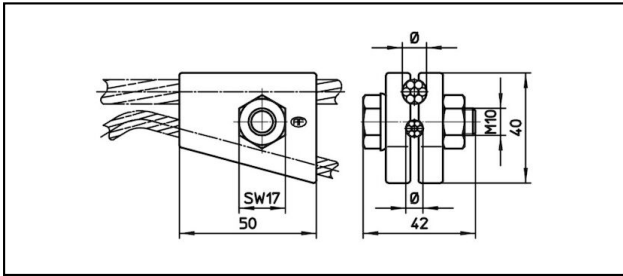
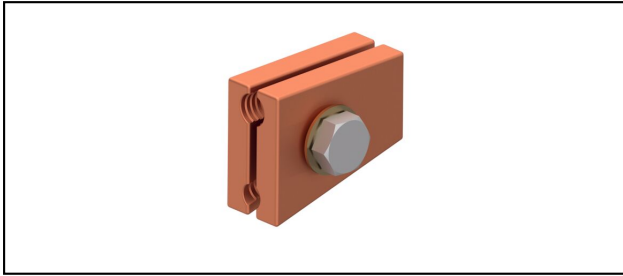


Various clamps

■ **YK50** Y-Clamp



**Application**  
For Y-wire

**Characteristics**  
Max. tension for Y-wire 4.5 kN  
Torque 45 Nm

**Material**  
CuNiSi

**Legend**  
1) for Y-wire 25 mm<sup>2</sup>  
2) for Y-wire 35 - 50 mm<sup>2</sup>

Article-Nr.									
635.003.000	8.4 - 11	50 - 70	7.3 - 9					0.256	2



Technical Specifications: **Y-Clamp YK50**

Article No.	635.003.000
<b>Starting torque</b>	45 N·m
<b>Catenary wire diameter</b>	8.4 - 11 mm
<b>Catenary wire section</b>	50 - 70 mm <sup>2</sup>
<b>Y-cable section</b>	7.3 - 9 mm
<b>comment</b>	2
Commercial specification	
<b>Customs number</b>	85359000
<b>country of origin</b>	CH
Texte	
<b>comment</b>	2
Logistic specification	
<b>Kilo / piece</b>	0.256 kg

