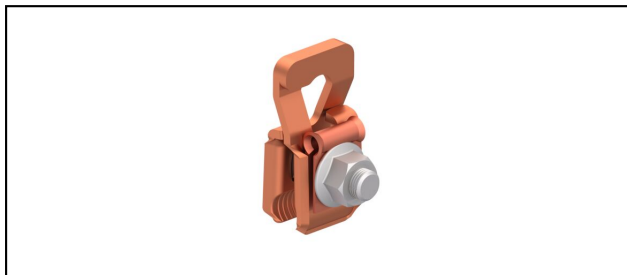


Attaches à câble

■ SKTF5S Attache pour câble porteur et fil de contact



Application

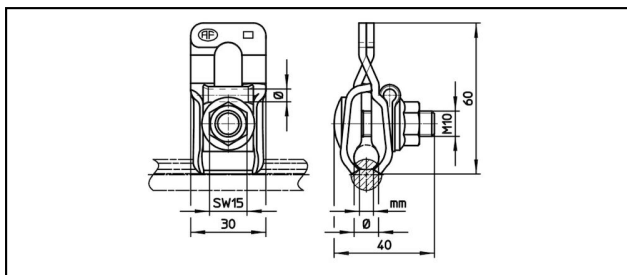
Pour pendules à câble, équipotentiel

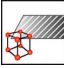
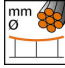


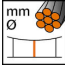
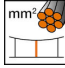
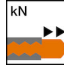

Description

Couple de serrage 20-25 Nm

Matériel

Corps en CuNiSi ou acier inoxydable



Réf. article									
625.035.000	CuNiSi	9 - 13	50 - 95	5.5 - 7	4.5	10	4		0.115

Caractéristiques techniques: **Attache pour câble porteur et fil de contact SKTF5S**

Ref. article	625.035.000
Matériel	CuNiSi
Diamètre câble porteur	9 - 13 mm
Section câble porteurs	50 - 95 mm ²
Rainure du fil de contact	5.5 - 7 mm
Diamètre fil de suspension	4.5 mm
Section fil de suspension	10 mm ²
Force de glissade	4 kN
	20 - 25 N·m
Spécifications commerciales	
Numéro de tarif douanier	85359000
pays d'origine	CH
Spécifications logistiques	
Kilo / pièce	0.115 kg