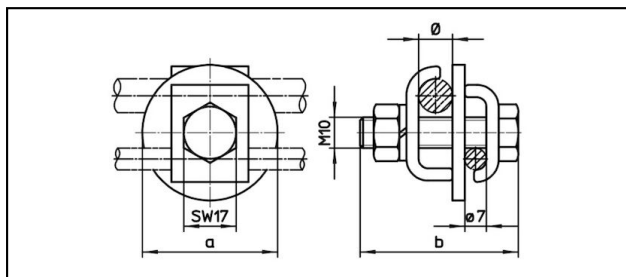


## Pinces diverses

### ■ **KK7** Borne de croisement



#### Application



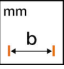

Pour fil de contact en cuivre ou alliage

#### Description

Couple de serrage 25 Nm

#### Matériel

Plaques de serrage CuNiSi

Réf. article	 mm ø	 mm a	 mm b						 Kg
635.306.057	7	35	46.4						0.11
635.307.058	9	35	46.4						0.16
635.308.059	11	44	51.4						0.15
635.309.060	13	50	56.4						0.2

Caractéristiques techniques: **Borne de croisement KK7**

	635.306.057	635.307.058	635.308.059	635.309.060
<b>Longueur a</b>	35 mm		44 mm	50 mm
<b>Largeur b</b>	46.4 mm		51.4 mm	56.4 mm
<b>Diamètre câble porteur</b>	7 mm	9 mm	11 mm	13 mm
<b>Couple de serrage</b>	25 N·m			
Spécifications commerciales				
<b>Numéro de tarif douanier</b>	85359000			
<b>pays d'origine</b>	CH			
Spécifications logistiques				
<b>Kilo / pièce</b>	0.11 kg	0.16 kg	0.15 kg	0.2 kg