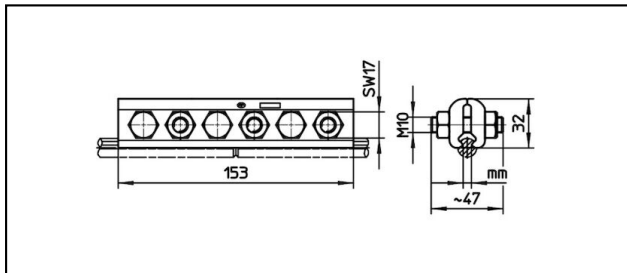
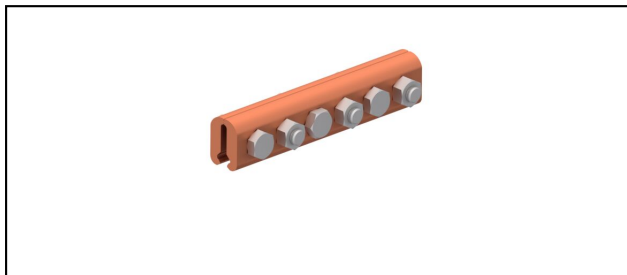


Griffes striées

■ SKF6-153



Application

Griffe striée pour fil de contact en cuivre ou alliage

Description

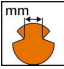
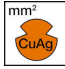
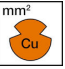
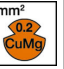
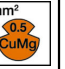


Couple de serrage 50 Nm

Matériel

Plaques de serrage CuNiSi

Légende

- 1) Avec rondelle à portée sphérique
- 2) Alliage de cuivre spécial à haute résistance mécanique

Réf. article									
635.010.000	5 - 6.9	- 150	- 150	- 107	- 107			0.9	1
635.322.000	5 - 6.9	- 150	- 150	- 107	- 107			0.87	
635.363.000	5.6 - 6.9	- 150	- 150	- 150	- 150			0.87	2

Caractéristiques techniques: **SKF6-153**

	635.010.000	635.322.000	635.363.000
Couple de serrage	50 N·m		
Section fil de contact Cu	- 150 mm ²		
Section fil de contact CuMg 0.2	- 107 mm ²	- 150 mm ²	
Section fil de contact CuMg 0.5	- 107 mm ²	- 150 mm ²	
Section fil de contact CuAg	- 150 mm ²		
Rainure du fil de contact	5 - 6.9 mm	5.6 - 6.9 mm	
Spécifications commerciales			
Numéro de tarif douanier	85359000		
pays d'origine	CH		
Spécifications logistiques			
Kilo / pièce	0.9 kg	0.87 kg	

