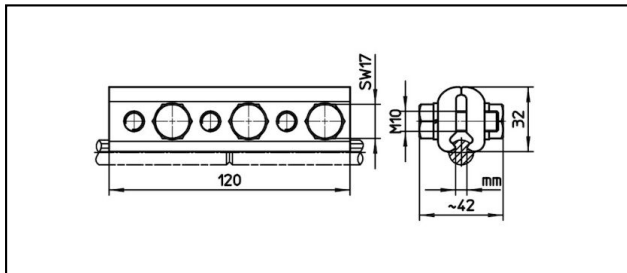
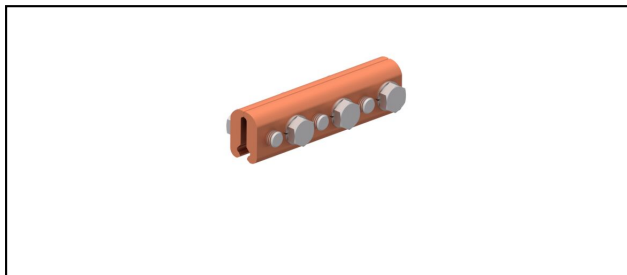


Griffes striées

■ **SKF6-120** Griffes striées



Application

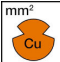
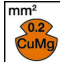

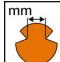

Griffe striée pour fil de contact en cuivre ou alliage

Description

Couple de serrage 50 Nm

Matériel

Plaques de serrage CuNiSi

Réf. article	 mm ²	 mm ²	 mm ²	 mm					 Kg
635.032.000	- 150	- 107	- 150	5.6 - 6.9					0.638

Caractéristiques techniques: **Griffe striée SKF6-120**

Ref. article	635.032.000
Couple de serrage	50 N·m
Section fil de contact Cu	- 150 mm ²
Section fil de contact CuMg 0.2	- 107 mm ²
Section fil de contact CuAg	- 150 mm ²
Rainure du fil de contact	5.6 - 6.9 mm
Spécifications commerciales	
Numéro de tarif douanier	85359000
pays d'origine	CH
Spécifications logistiques	
Kilo / pièce	0.638 kg

