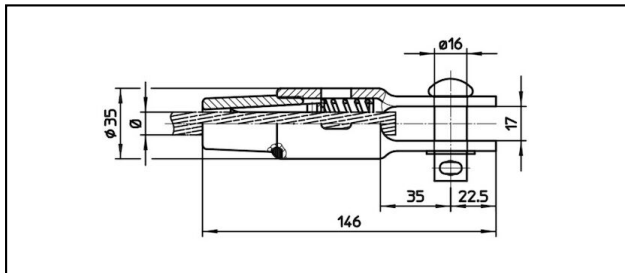
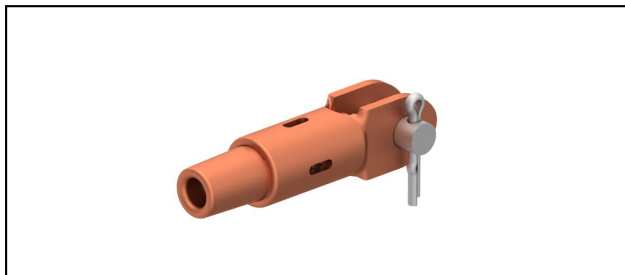


## Manchons d'extrémité

■ **GCK146/17 Spc.** Manchon d'extrémité**Application**

Conducteurs Cu, Cu-acier ou Bz soumis à la traction

**Description**

Charge en service min. 3 kN / max. 25 kN


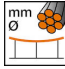
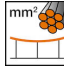
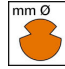



Charge de rupture du carter min. 80 kN

**Matériel**

Carter en CuNiSi / Cône en AlBz resp. en CuNiSi

**Légende**

1) Avec clavette et rondelle

| Réf. article |  |  |  |  |  |  |  |  |  |
|--------------|---|---|---|---|---|--|--|---|---|
| 615.053.103  | 72  | 9.6   | 72  |   |   |  |  | 0.61  | 1   |

Caractéristiques techniques: **Manchon d'extrémité GCK146/17 Spc.**

|                                 |                    |
|---------------------------------|--------------------|
| Ref. article                    | 615.053.103        |
| <b>ferroviaire produit nom</b>  | 72                 |
| <b>Diamètre câble porteur</b>   | 9.6 mm             |
| <b>Section câble porteurs</b>   | 72 mm <sup>2</sup> |
| <b>remarque</b>                 | 1                  |
| Spécifications commerciales     |                    |
| <b>Numéro de tarif douanier</b> | 85359000           |
| <b>pays d'origine</b>           | CH                 |
| Texte                           |                    |
| <b>remarque</b>                 | 1                  |
| Spécifications logistiques      |                    |
| <b>Kilo / pièce</b>             | 0.61 kg            |