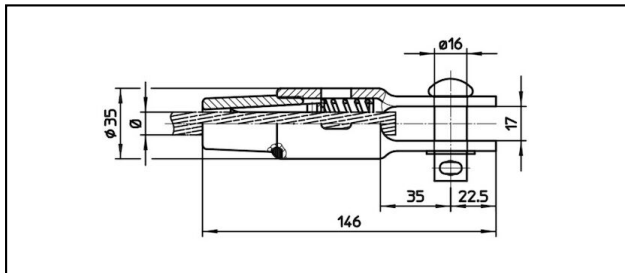
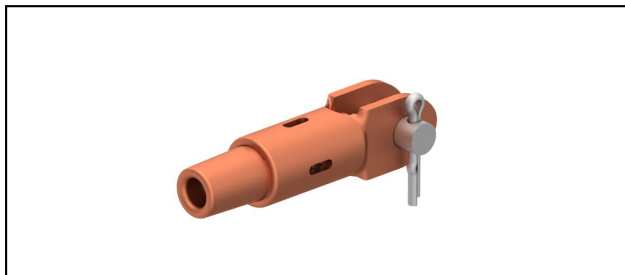


Manchons d'extrémité

■ **GCK146/17 Spc.** Manchon d'extrémité**Application**

Conducteurs Cu, Cu-acier ou Bz soumis à la traction

Description

Charge en service min. 3 kN / max. 25 kN


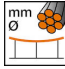
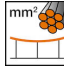
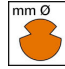



Charge de rupture du carter min. 80 kN

Matériel

Carter en CuNiSi / Cône en AlBz resp. en CuNiSi

Légende

1) Avec clavette et rondelle

Réf. article									
615.051.100	FD100			12.8	100			0.61	1

Caractéristiques techniques: **Manchon d'extrémité GCK146/17 Spc.**

Ref. article	615.051.100
ferroviaire produit nom	FD100
Diamètre fil de contact	12.8 mm
Section fil de contact	100 mm ²
remarque	1
Spécifications commerciales	
Numéro de tarif douanier	85359000
pays d'origine	CH
Texte	
remarque	1
Spécifications logistiques	
Kilo / pièce	0.61 kg

