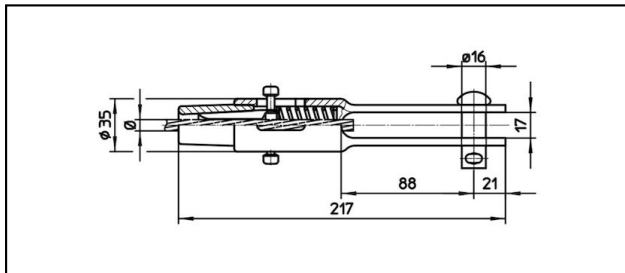
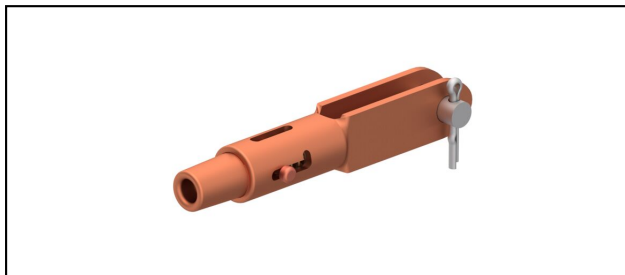


Manchons d'extrémité

■ **GCL217/17** Manchon d'extrémité**Application**

Conducteurs Cu, Cu-acier ou Bz soumis à la traction

Description

Charge en service min. 3 kN / max. 25 kN


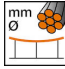
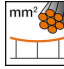
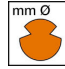



Charge de rupture du carter min. 80 kN

Matériel

Carter en CuNiSi / Cône en AlBz resp. en CuNiSi

Légende

- 1) Cône en acier inoxydable pour câbles en inox
- 2) Sans goujon Ø 16 (perçage Ø 16.75)

Réf. article									
615.085.041	D5	4.9	20					0.87	

Caractéristiques techniques: **Manchon d'extrémité GCL217/17**

Ref. article	615.085.041
ferroviaire produit nom	D5
Diamètre câble porteur	4.9 mm
Section câble porteurs	20 mm ²
Spécifications commerciales	
Numéro de tarif douanier	85359000
pays d'origine	CH
Spécifications logistiques	
Kilo / pièce	0.87 kg