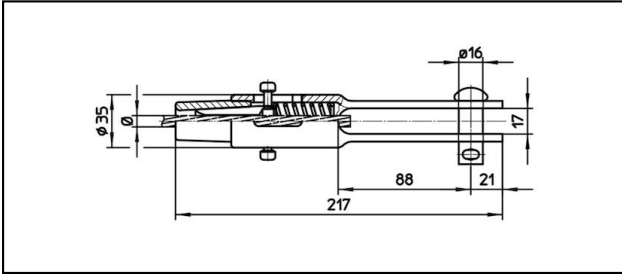
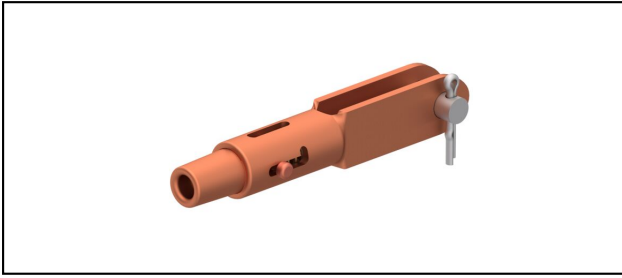


## Manchons d'extrémité

■ **GCL217/17** Manchon d'extrémité**Application**

Conducteurs Cu, Cu-acier ou Bz soumis à la traction

**Description**

Charge en service min. 3 kN / max. 25 kN



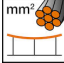
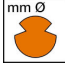



Charge de rupture du carter min. 80 kN

**Matériel**

Carter en CuNiSi / Cône en AIBz resp. en CuNiSi

**Légende**

- 1) Cône en acier inoxydable pour câbles en inox
- 2) Sans goujon Ø 16 (perçage Ø 16.75)

Réf. article									
615.087.027	D8	7.9	50					0.86	

Caractéristiques techniques: **Manchon d'extrémité GCL217/17**

Ref. article	615.087.027
<b>ferroviaire produit nom</b>	D8
<b>Diamètre câble porteur</b>	7.9 mm
<b>Section câble porteurs</b>	50 mm <sup>2</sup>
Spécifications commerciales	
<b>Numéro de tarif douanier</b>	85359000
<b>pays d'origine</b>	CH
Spécifications logistiques	
<b>Kilo / pièce</b>	0.86 kg