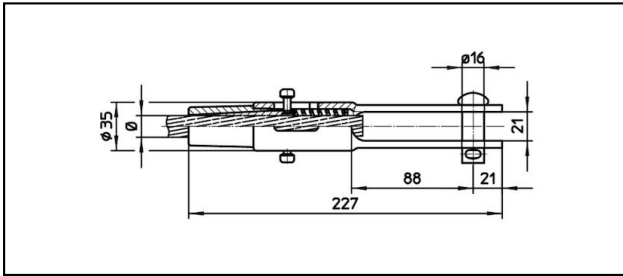
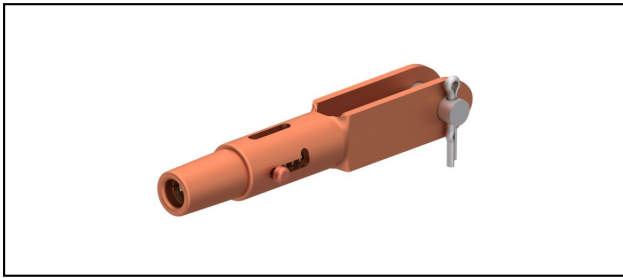


Manchons d'extrémité

■ **GCL227/21** Manchon d'extrémité**Application**

Conducteurs Cu, Cu-acier ou Bz soumis à la traction



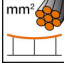
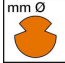


Description

Charge en service min. 3 kN / max. 25 kN

Charge de rupture du carter min. 80 kN

Matériel

Carter en CuNiSi / Cône en AlBz

Réf. article									
615.123.105	FD120			13.8	120				0.91

Caractéristiques techniques: **Manchon d'extrémité GCL227/21**

Ref. article	615.123.105
ferroviaire produit nom	FD120
Diamètre fil de contact	13.8 mm
Section fil de contact	120 mm ²
Spécifications commerciales	
Numéro de tarif douanier	85359000
pays d'origine	CH
Spécifications logistiques	
Kilo / pièce	0.91 kg

