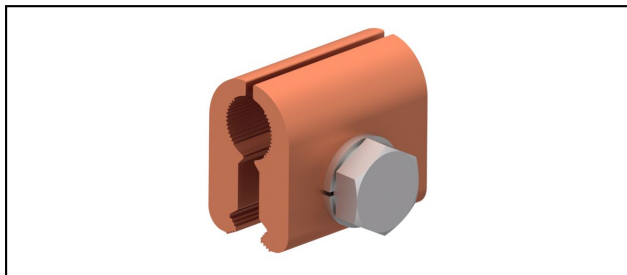


Pinces d'alimentation

EK36



Application

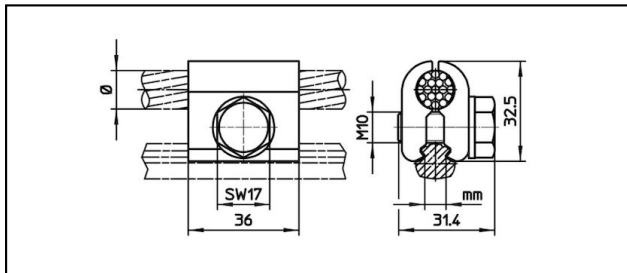
Pince d'alimentation parallèle pour fil de contact

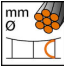
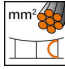
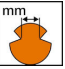


Description

Couple de serrage 50 Nm

Matériel

CuNiSi



Réf. article	 mm Ø	 mm²	 mm	 mm²					 Kg
635.348.000	12.5	95	6.92	107 - 150					0.15

Caractéristiques techniques: **EK36**

	635.348.000
Couple de serrage	50 N·m
Diamètre câble d'alimentation	12.5 mm
Section câble d'alimentation	95 mm ²
Rainure du fil de contact	6.92 mm
Section fil de contact	107 - 150 mm ²
Spécifications commerciales	
Numéro de tarif douanier	85359000
pays d'origine	CH
Spécifications logistiques	
Kilo / pièce	0.15 kg

