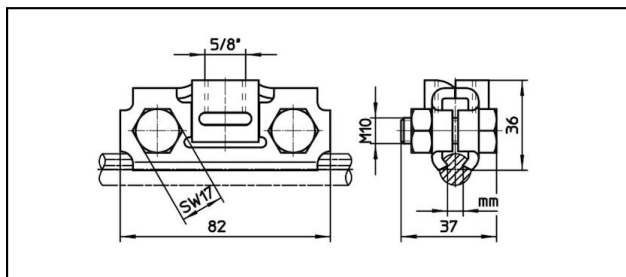


Pinces sur bras de retenue

■ **SHK82-A** Pince sur bras de retenue

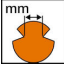





Application
Bras de retenue avec goupille fileté

Description
Couple de serrage 30 Nm

Matériel
Plaques de serrage CuNiSi

Légende
1) Ecrou 1 D

Réf. article									
635.117.000	5 - 8.5	80 - 193						0.27	
635.164.000	5 - 8.5	80 - 193						0.27	1

Caractéristiques techniques: **Pince sur bras de retenue SHK82-A**

	635.117.000	635.164.000
Couple de serrage	30 N·m	
Rainure du fil de contact	5 - 8.5 mm	
Section fil de contact	80 - 193 mm ²	
Spécifications commerciales		
Numéro de tarif douanier	85359000	0
pays d'origine	CH	ZA*
Spécifications logistiques		
Kilo / pièce	0.27 kg	