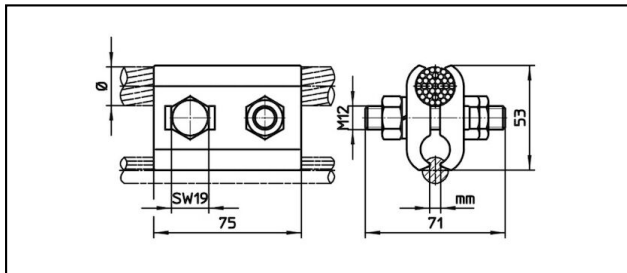
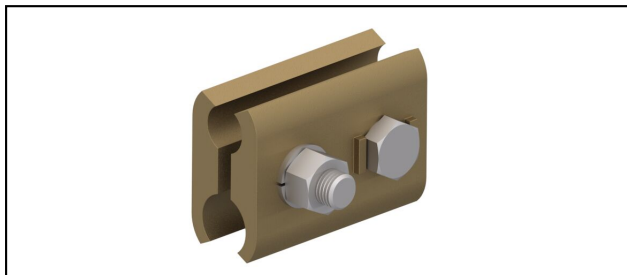


## Pinces d'alimentation

### ■ PEK22 Pinces d'alimentation parallèles



**Application**

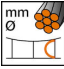
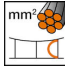
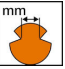

Pince d'alimentation parallèle pour fil de contact

**Description**

Couple de serrage 65 Nm

**Matériel**

CuZn

Réf. article									
635.162.000	12.5 - 20	95 - 225	3.75 - 8.5						0.7

Caractéristiques techniques: **Pinces d'alimentation parallèles PEK22**

Ref. article	635.162.000
<b>Couple de serrage</b>	65 N·m
<b>Diamètre câble d'alimentation</b>	12.5 - 20 mm
<b>Section câble d'alimentation</b>	95 - 225 mm <sup>2</sup>
<b>Rainure du fil de contact</b>	3.75 - 8.5 mm
Spécifications commerciales	
<b>Numéro de tarif douanier</b>	85359000
<b>pays d'origine</b>	CE*
Spécifications logistiques	
<b>Kilo / pièce</b>	0.7 kg

