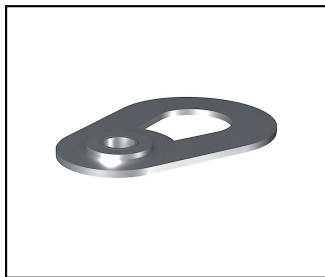
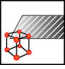
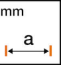
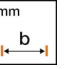
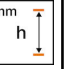
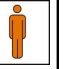



## Points d'ancrage

■ **EAP F** Point d'ancrage**Description**

Point d'ancrage plat rotatif en Inox A2 pour montage vissé sur filetage M16

| Réf. article | Nombre-E |  |  |  |  |  |  |  |  |  |
|--------------|----------|---|---|---|---|--|--|--|--|---|
| 310.000.006  |          | InoxA2  | 115   | 75  | 10  | 4  |  |  |  | 10  |

Caractéristiques techniques: **Point d'ancrage EAP F**

|                                 |             |
|---------------------------------|-------------|
|                                 | 310.000.006 |
| <b>Matériel</b>                 | InoxA2      |
| <b>Longueur a</b>               | 115 mm      |
| <b>Largeur b</b>                | 75 mm       |
| <b>Hauteur H</b>                | 10 mm       |
| <b>Nombre de personne</b>       | 4           |
| Spécifications commerciales     |             |
| <b>Numéro de tarif douanier</b> | 73089000    |
| <b>pays d'origine</b>           | CH          |
| Spécifications logistiques      |             |
| <b>VPE Poids</b>                | 1.61 kg     |

