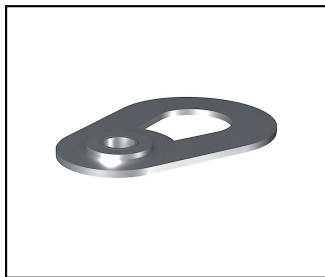
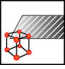
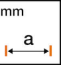
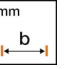
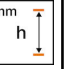
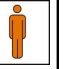



Points d'ancrage

■ **EAP F** Points d'ancrage rotatif plat**Description**

Point d'ancrage plat rotatif en Inox A2 pour montage vissé sur filetage M16

Réf. article	Nombre-E									
310.000.006		InoxA2	115	75	10	4				10

Caractéristiques techniques: **Points d'ancrage rotatif plat EAP F**

Ref. article	310.000.006
Matériel	InoxA2
Longueur a	115 mm
Largeur b	75 mm
Hauteur H	10 mm
Nombre de personne	4
Spécifications commerciales	
Numéro de tarif douanier	73089000
pays d'origine	CH
Spécifications logistiques	
VPE Poids	1.61 kg

