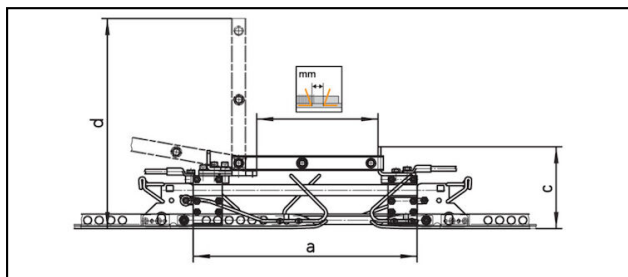


Accessoires

■ **TM460** Sectionneur



**Application**

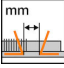
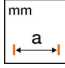
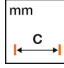


Sectionneur pour isolateur de section Typ ZS3, rapidité et simplicité lors de chantier de construction.





**Description**

Utilisation hors tension.  
Pour perche de manoeuvre type BS2700.

**Matériel**

Elément de fixation en acier inoxydable  
Eléments de contact en CuvSn

Réf. article									
655.249.000	330	615	235	580					6

Accessoires									
 <b>Perche de manoeuvre BS2700</b>									
Réf. article									
645.114.000	2700 - 4850							2.6	1
645.127.000	2613 - 4813							3.2	2, 3



Caractéristiques techniques: **Sectionneur TM460**

Ref. article	655.249.000
<b>Distance du cornet</b>	330 mm
<b>Longueur a</b>	615 mm
<b>Hauteur c</b>	235 mm
<b>Longueur d</b>	580 mm
Spécifications commerciales	
<b>Numéro de tarif douanier</b>	85353000
<b>pays d'origine</b>	CH
Spécifications logistiques	
<b>Kilo / pièce</b>	6 kg

