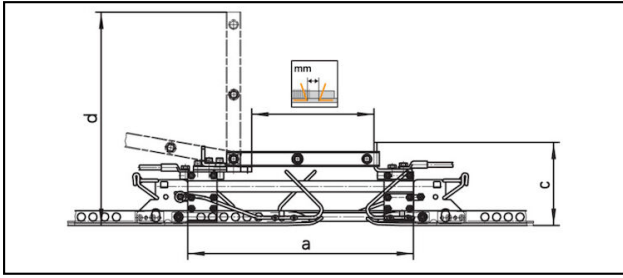


Accessoires

■ **TM680**



**Application**

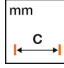


Sectionneur pour isolateur de section Typ ZS15, rapidité et simplicité lors de chantier en construction.





**Description**

Utilisation hors tension.  
Pour perche de manoeuvre type BS2700.

**Matériel**

Eléments de fixation en acier inoxydable  
Eléments de contact en CuvSn

Réf. article									
655.248.000	405	835	235	660					6.4

Accessoires									
 <b>Perche de manoeuvre BS2700</b>									
Réf. article									
645.114.000	2700 - 4850							2.6	1
645.127.000	2613 - 4813							3.2	2, 3



Caractéristiques techniques: **TM680**

	655.248.000
<b>Distance du cornet</b>	405 mm
<b>Longueur a</b>	835 mm
<b>Hauteur c</b>	235 mm
<b>Longueur d</b>	660 mm
Spécifications commerciales	
<b>Numéro de tarif douanier</b>	85353000
<b>pays d'origine</b>	CH
Spécifications logistiques	
<b>Kilo / pièce</b>	6.4 kg

