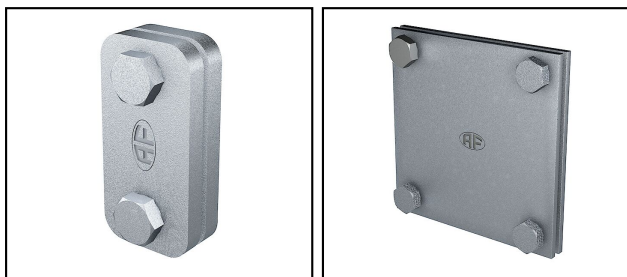


## Raccords et branchements


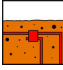
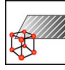

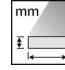


■ **RE 45** Serre-fils en croix et parallèle



**Légende**

a) 2 vis

b) 4 vis

| Réf. article | Nombre-E    |  |  |  |  |  |  |  |  |  |
|--------------|-------------|---|---|---|---|---|--|--|---|---|
| 261.080.030  | 156 740 910 | H   | ok  | StvZn   | M8x20   | 30x3  |  |  | a)  | 25  |
| 261.080.040  | 156 740 740 | H   | ok  | StvZn   | M8x35   | 40x4  |  |  | b)  | 10  |

Caractéristiques techniques: **Serre-fils en croix et parallèle RE 45**

|  |                               |                                 |
|--|-------------------------------|---------------------------------|
|  | 261.080.030                   | 261.080.040                     |
| <b>Approuvé classe H / N (EN 62561-1)</b>      | H                             |                                 |
| <b>Convient pour utilisation dans la terre</b> | ok                            |                                 |
| <b>Matériel</b>                                | StvZn                         |                                 |
| <b>Vis</b>                                     | M8x20                         | M8x35                           |
| <b>Bande dimension</b>                         | 30x3 mm                       | 40x4 mm                         |
| <b>Type de connecteur (serre-fil)</b>          | raccord parallèle             | raccordement en croix/parallèle |
| <b>Approprié pour raccordement</b>             | conducteur plat FI 30 / FI 30 | conducteur plat FI 40 / FI 40   |
| <b>Type de vis de fixation</b>                 | vis hexagonale                |                                 |
| <b>Surface</b>                                 | non-traité                    |                                 |
| <b>couple de serrage</b>                       | 12 N·m                        |                                 |
| <b>Spécifications commerciales</b>             |                               |                                 |
| <b>Numéro de tarif douanier</b>                | 85389000                      |                                 |
| <b>pays d'origine</b>                          | CE*                           |                                 |

