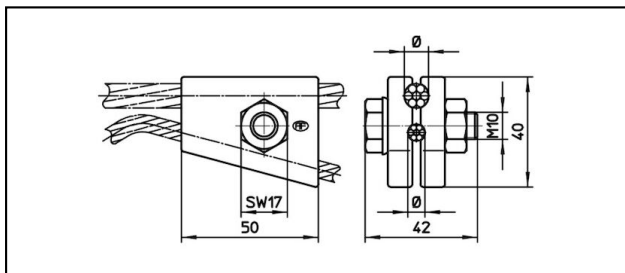
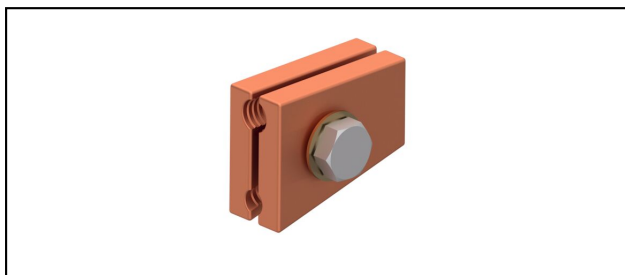


### Pinces diverses

■ **YK50** Serre-fils Y



**Application**

Câble Y

**Description**




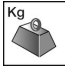

Serre-fils utilisable des deux côtés, max. 4.5 kN  
Couple de serrage 45 Nm

**Matériel**

CuNiSi

**Légende**

- 1) pour câble Y 25 mm<sup>2</sup>
- 2) pour câble Y 35 - 50 mm<sup>2</sup>

Réf. article									
635.347.000	9	50	6.3					0.256	1
635.003.000	8.4 - 11	50 - 70	7.3 - 9					0.256	2
635.362.000	12.3	92	6.42					0.256	1

Caractéristiques techniques: **Serre-fils Y YK50**

	635.347.000	635.003.000	635.362.000
<b>Couple de serrage</b>	45 N·m		
<b>Diamètre câble porteur</b>	9 mm	8.4 - 11 mm	12.3 mm
<b>Section câble porteurs</b>	50 mm <sup>2</sup>		50 - 70 mm <sup>2</sup>
<b>Section Y-câble</b>	6.3 mm	7.3 - 9 mm	6.42 mm
Spécifications commerciales			
<b>Numéro de tarif douanier</b>	85359000		
<b>pays d'origine</b>	ZA*	CH	ZA*
Spécifications logistiques			
<b>Kilo / pièce</b>	0.256 kg		

