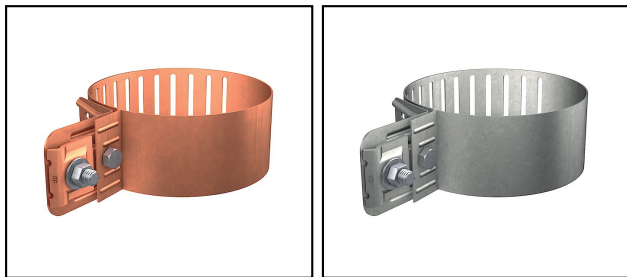

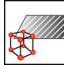
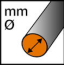

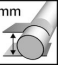



Organi di discesa (calate)

■ **AL 3** Collare di contatto



Rif. Articolo	Numéro-E								
280.102.000	156 831 180	H	InoxA2	6 - 10	M8x30	50 - 100			25

Specifiche tecniche: **Collare di contatto AL 3**

Articolo no.	280.102.000
Approvati classe H / N (EN 62561-1)	H
Materiale	InoxA2
Diametro del filo	6 - 10 mm
Vite	M8x30
Range di serraggio (diametro)	50 - 100 mm
Superficie	non trattato
Numero di conduttori	1
Sezione del cavo da collegare	25 - 75 mm ²
Zona di serraggio/bloccaggio	50 - 100 mm
coppia di serraggio	12 N·m
Specifiche commerciali	
Numero di tariffa doganale	85389000
paese di origine	CH
Specificazione logistica	
VPE Peso	5.062 kg