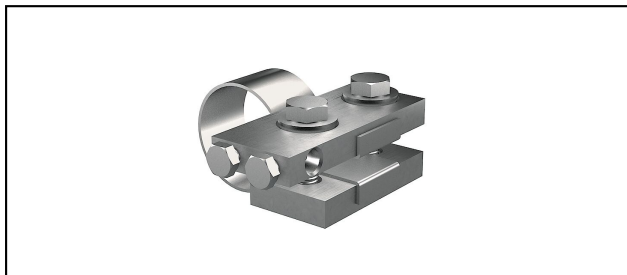


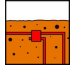
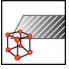
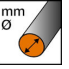
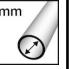



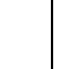

Dispensore di terra ad anello

RE 35 Collare di contatto



Caratteristiche

Vite di serraggio M10x40

Rif. Articolo	Numéro-E									
260.022.034	156 832 440	ok	InoxA4	max.9	60 spez		73 - 75	M10x40		1

Specifiche tecnici: **Collare di contatto RE 35**

Articolo no.	260.022.034
Adatto per uso in terra	ok
Materiale	InoxA4
Diametro del filo	max.9
Larghezza nominale	60 spez
Range di serraggio diametro del tubo	73 - 75 mm
Zona di serraggio/bloccaggio in pollici	2 pollici
Sezione del cavo da collegare	50 mm ²
Vite	M10x40
Superficie	non trattato
Zona di serraggio/bloccaggio	73 - 75 mm
Numero di conduttori	1
coppia di serraggio	12 N·m
Specifiche commerciali	
Numero di tariffa doganale	85389000
paese di origine	CH
Specificazione logistica	
VPE Peso	0.798 kg

