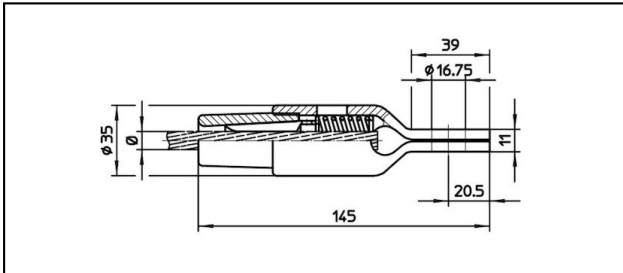
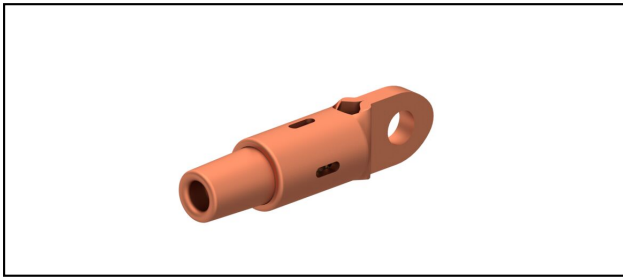


Connettore con occhio CuNiSi

■ OCK145 Connettore con occhio



Applicazione

Conduttori in Cu, Cu-acciaio o Bz sottoposti a tiro meccanico



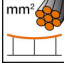
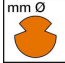


Caratteristiche

Carico di esercizio min. 3 kN / max. 25 kN

Carico di rottura del corpo min. 80 kN

Materiale

Corpo CuNiSi / Cono AIBz

Rif. Articolo										
615.150.041	D5	4.9	5							0.55

Specifiche tecnici: **Connettore con occhio OCK145**

Articolo no.	615.150.041
ferroviaria prodotto nome	D5
Diametro funi portanti	4.9 mm
Sezione funi portanti	5 mm ²
Specifiche commerciali	
Numero di tariffa doganale	0
paese di origine	ZA*
Specificazione logistica	
Chilo / pezzo	0.55 kg