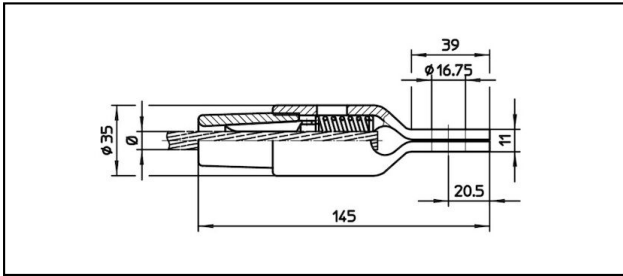
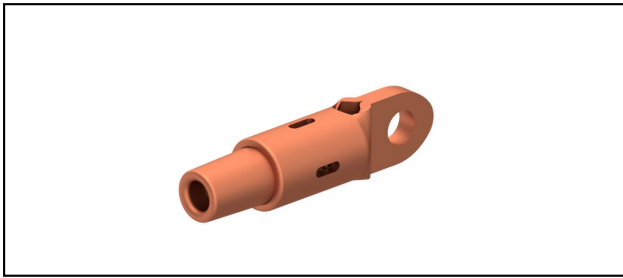


## Connettore con occhio CuNiSi

### ■ OCK145 Connettore con occhio



#### Applicazione

Conduttori in Cu, Cu-acciaio o Bz sottoposti a tiro meccanico



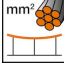
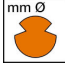


#### Caratteristiche

Carico di esercizio min. 3 kN / max. 25 kN

Carico di rottura del corpo min. 80 kN

#### Materiale

Corpo CuNiSi / Cono AIBz

Rif. Articolo										
615.156.102	S50	8.9	50							0.54

Specifiche tecnici: **Connettore con occhio OCK145**

Articolo no.	615.156.102
<b>ferroviaria prodotto nome</b>	S50
<b>Diametro funi portanti</b>	8.9 mm
<b>Sezione funi portanti</b>	50 mm <sup>2</sup>
Specifiche commerciali	
<b>Numero di tariffa doganale</b>	85359000
<b>paese di origine</b>	CH
Specificazione logistica	
<b>Chilo / pezzo</b>	0.54 kg