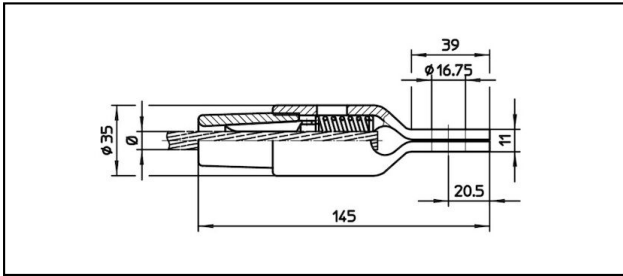
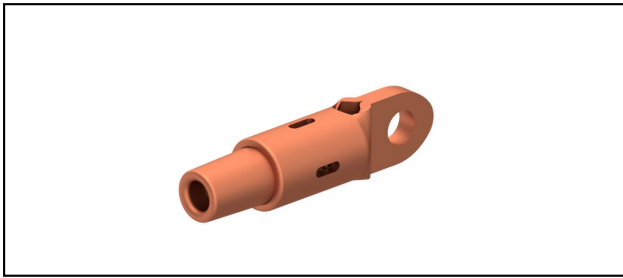


Connettore con occhio CuNiSi

■ OCK145 Connettore con occhio



Applicazione

Conduttori in Cu, Cu-acciaio o Bz sottoposti a tiro meccanico



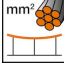
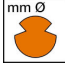


Caratteristiche

Carico di esercizio min. 3 kN / max. 25 kN

Carico di rottura del corpo min. 80 kN

Materiale

Corpo CuNiSi / Cono AIBz

Rif. Articolo										
615.158.104	S95	12.8	95							0.53

Specifiche tecnici: **Connettore con occhio OCK145**

Articolo no.	615.158.104
ferroviaria prodotto nome	S95
Diametro funi portanti	12.8 mm
Sezione funi portanti	95 mm ²
Specifiche commerciali	
Numero di tariffa doganale	85359000
paese di origine	CH
Specificazione logistica	
Chilo / pezzo	0.53 kg

