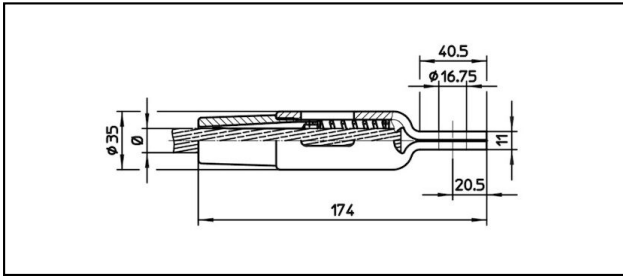
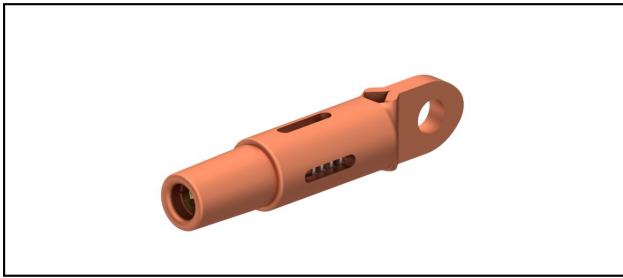


Connettore con occhio CuNiSi

■ OCK174 Connettore con occhio



Applicazione

Conduttori in Cu, Cu-acciaio o Bz sottoposti a tiro meccanico



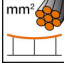
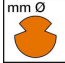


Caratteristiche

Carico di esercizio min. 3 kN / max. 25 kN

Carico di rottura del corpo min. 80 kN

Materiale

Corpo CuNiSi / Cono AIBz

Rif. Articolo										
615.161.106	S150	15.8	150							0.62

Specifiche tecnici: **Connettore con occhio OCK174**

Articolo no.	615.161.106
ferroviaria prodotto nome	S150
Diametro funi portanti	15.8 mm
Sezione funi portanti	150 mm ²
Specifiche commerciali	
Numero di tariffa doganale	85359000
paese di origine	CH
Specificazione logistica	
Chilo / pezzo	0.62 kg