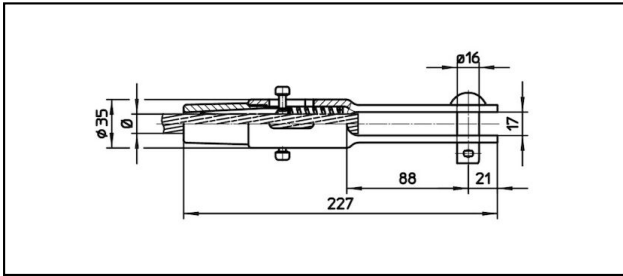
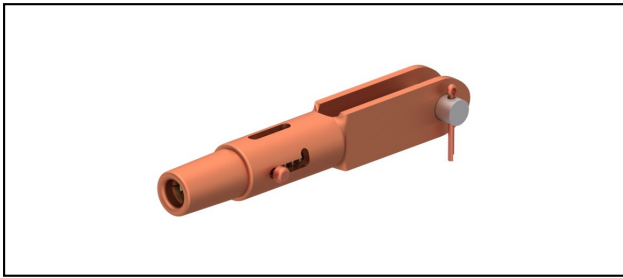


## Morse di amarro

## ■ GCL227/17 Spc.

**Applicazione**

Conduttori in Cu, Cu-acciaio o Bz sottoposti a tiro meccanico

**Caratteristiche**


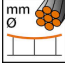
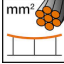
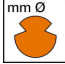


Con copiglia in Cu

Carico di esercizio min. 3 kN / max. 25 kN

Carico di rottura del corpo min. 80 kN

**Materiale**

Corpo CuNiSi / Cono AIBz

Rif. Articolo		 mm Ø	 mm²	 mm Ø	 mm²				 Kg
615.199.105	S120	14	120						0.91
615.201.106	FD150			14.5	150				0.9

Specifiche tecnici: **GCL227/17 Spc.**

	615.199.105	615.201.106
<b>ferroviaria prodotto nome</b>	S120	FD150
<b>Diametro funi portanti</b>	14 mm	
<b>Sezione funi portanti</b>	120 mm <sup>2</sup>	
<b>Diametro filo di contatto</b>		14.5 mm
<b>Sezione filo di contatto</b>		150 mm <sup>2</sup>
<b>Specifiche commerciali</b>		
<b>Numero di tariffa doganale</b>	85359000	
<b>paese di origine</b>	CH	
<b>Specificazione logistica</b>		
<b>Chilo / pezzo</b>	0.91 kg	0.9 kg