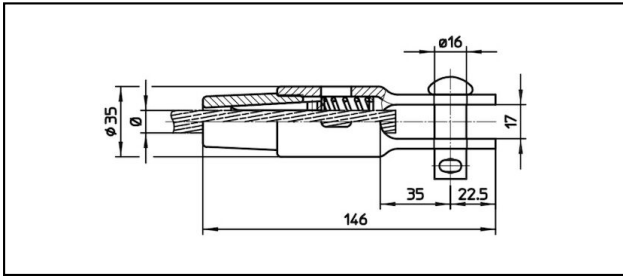
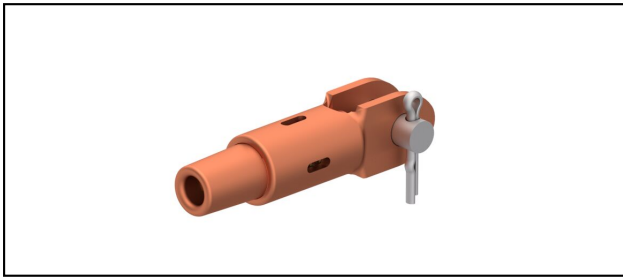


## Morse di amarro

### ■ GCK146/17 Morsa di amarro



#### Applicazione

Conduttori in Cu, Cu-acciaio o Bz sottoposti a tiro meccanico



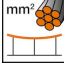
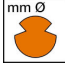


#### Caratteristiche

Carico di esercizio min. 3 kN / max. 25 kN

Carico di rottura del corpo min. 80 kN

#### Materiale

Corpo CuNiSi / Cono AIBz o CuNiSi

| Rif. Articolo |  |  |  |  |  |  |  |  |  |
|---------------|---|---|---|---|---|--|--|--|---|
| 615.032.027   | D8  | 7.9   | 8   |   |   |  |  |  | 0.61  |

Specifiche tecnici: **Morsa di amarro GCK146/17**

|                                   |                   |
|-----------------------------------|-------------------|
| Articolo no.                      | 615.032.027       |
| <b>ferroviaria prodotto nome</b>  | D8                |
| <b>Diametro funi portanti</b>     | 7.9 mm            |
| <b>Sezione funi portanti</b>      | 8 mm <sup>2</sup> |
| Specifiche commerciali            |                   |
| <b>Numero di tariffa doganale</b> | 85359000          |
| <b>paese di origine</b>           | CH                |
| Specificazione logistica          |                   |
| <b>Chilo / pezzo</b>              | 0.61 kg           |

